

CLASS VII CH 7 HUMAN ENVIRONMENT - SETTLEMENT, TRANSPORT AND COMMUNICATION (NCERT)

QUESTION – ANSWER

www.evidyarthi.in



CLASS VII CH 7 HUMAN ENVIRONMENT - SETTLEMENT, TRANSPORT AND COMMUNICATION (NCERT)

www.evidyarthi.in

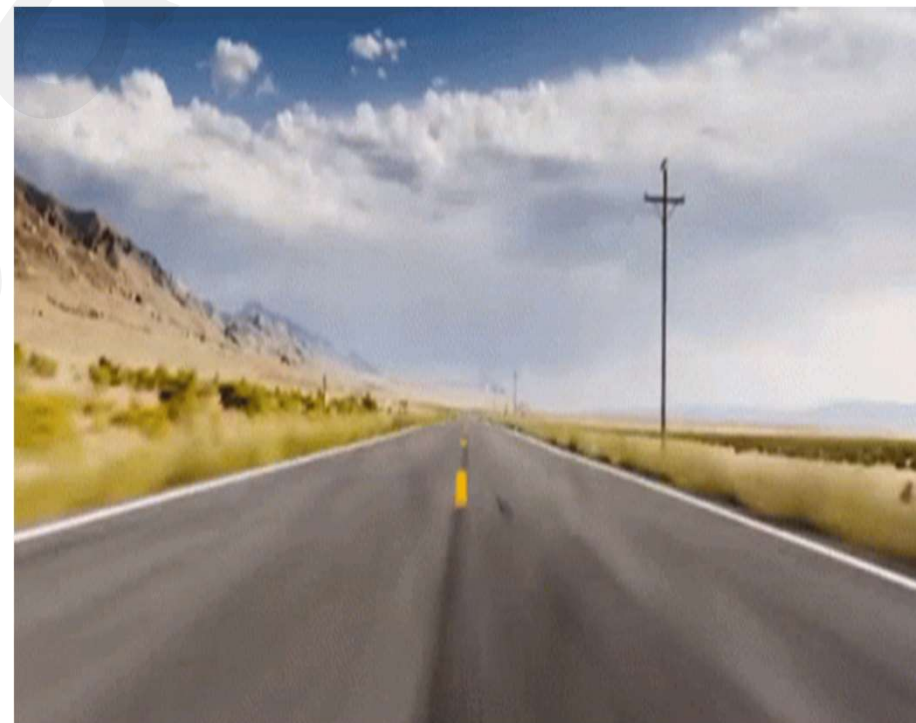
1. Answer the following questions briefly.

(a) What are the four means of transport ?

ANSWER:

THE FOUR MEANS OF TRANSPORT ARE:

1. ROADWAYS
2. RAILWAYS
3. WATERWAYS
4. AIRWAYS



CLASS VII CH 7 HUMAN ENVIRONMENT - SETTLEMENT, TRANSPORT AND COMMUNICATION (NCERT)

www.evidyarthi.in



<https://www.evidyarthi.in>

CLASS VII CH 7 HUMAN ENVIRONMENT - SETTLEMENT, TRANSPORT AND COMMUNICATION (NCERT)

www.evidyarthi.in

(b) What do you understand by the term 'settlement'?

ANSWER: The term 'settlement' refers to a place where people build their homes to live in.



<https://www.evidyarthi.in>

CLASS VII CH 7 HUMAN ENVIRONMENT - SETTLEMENT, TRANSPORT AND COMMUNICATION (NCERT)

www.evidyarthi.in

(c) Which are the activities practiced by the rural people?

ANSWER: The activities practiced by the rural people are farming, fishing, forestry, trading and craftwork, etc.



<https://www.evidyarthi.in>

CLASS VII CH 7 HUMAN ENVIRONMENT - SETTLEMENT, TRANSPORT AND COMMUNICATION (NCERT)

www.evidyarthi.in



<https://www.evidyarthi.in>

CLASS VII CH 7 HUMAN ENVIRONMENT - SETTLEMENT, TRANSPORT AND COMMUNICATION (NCERT)

www.evidyarthi.in

(d) Mention any two merits of railways.

ANSWER:

Two merits of railways are:

1. They carry people over long distances quickly and cheaply.
2. They carry heavy goods in bulk.



<https://www.evidyarthi.in>

CLASS VII CH 7 HUMAN ENVIRONMENT - SETTLEMENT, TRANSPORT AND COMMUNICATION (NCERT)

www.evidyarthi.in

(e) What do you understand by communication?

ANSWER:

Communication is a process by which we convey our messages to other.



<https://www.evidyarthi.in>

CLASS VII CH 7 HUMAN ENVIRONMENT - SETTLEMENT, TRANSPORT AND COMMUNICATION (NCERT)

www.evidyarthi.in

(f) What is mass media?

ANSWER:

Newspapers, radio and television are called mass media because we can communicate with a large number of people through them.



CLASS VII CH 7 HUMAN ENVIRONMENT - SETTLEMENT, TRANSPORT AND COMMUNICATION (NCERT)

www.evidyarthi.in



<https://www.evidyarthi.in>

CLASS VII CH 7 HUMAN ENVIRONMENT - SETTLEMENT, TRANSPORT AND COMMUNICATION (NCERT)

www.evidyarthi.in

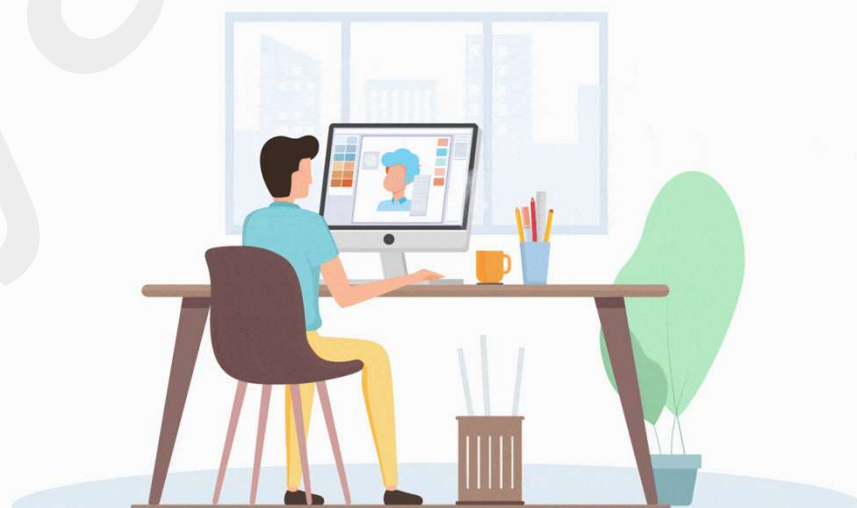
2. TICK THE CORRECT ANSWER:

(a) Which is not a means of communication?

(I) TELEPHONE

(II) BOOKS

(III) TABLE.



CLASS VII CH 7 HUMAN ENVIRONMENT - SETTLEMENT, TRANSPORT AND COMMUNICATION (NCERT)

www.evidyarthi.in

(b) Which type of road is constructed under the ground ?

(I) FLYOVER

(II) EXPRESS WAYS

(III) SUBWAYS.



<https://www.evidyarthi.in>

CLASS VII CH 7 HUMAN ENVIRONMENT - SETTLEMENT, TRANSPORT AND COMMUNICATION (NCERT)

www.evidyarthi.in

(c) Which mode of transport is most suitable to reach an island ?

- (I) SHIP**
- (II) TRAIN**
- (III) CAR.**



<https://www.evidyarthi.in>

CLASS VII CH 7 HUMAN ENVIRONMENT - SETTLEMENT, TRANSPORT AND COMMUNICATION (NCERT)

www.evidyarthi.in

(d) Which vehicle does not pollute the environment?

- (I) CYCLE**
- (II) BUS**
- (III) AERO PLANE.**



CLASS VII CH 7 HUMAN ENVIRONMENT - SETTLEMENT, TRANSPORT AND COMMUNICATION (NCERT)

www.evidyarthi.in

ANSWER:

(a)—(iii)

(b)—(iii)

(c)—(i)

(d)—(i).



CLASS VII CH 7 HUMAN ENVIRONMENT - SETTLEMENT, TRANSPORT AND COMMUNICATION (NCERT)

www.evidyarthi.in

3.MATCH THE FOLLOWING:

A	B
(i) Internet	(a) areas where people are engaged in manufacturing, trade and services
(ii) Canal route	(b) closely built area of houses

CLASS VII CH 7 HUMAN ENVIRONMENT - SETTLEMENT, TRANSPORT AND COMMUNICATION (NCERT)

www.evidyarthi.in

A	B
(iii) Urban areas	(c) houses on stilts
(iv) Compact settlement	(d) inland waterways
	(e) a means of communication

CLASS VII CH 7 HUMAN ENVIRONMENT - SETTLEMENT, TRANSPORT AND COMMUNICATION (NCERT)

www.evidyarthi.in

ANSWER:

(i)—(e)

(ii)—(d)

(iii)—(a)

(iv)—(b).



<https://www.evidyarthi.in>

CLASS VII CH 7 HUMAN ENVIRONMENT - SETTLEMENT, TRANSPORT AND COMMUNICATION (NCERT)

www.evidyarthi.in

4. GIVE REASONS:

(a) Today's world is shrinking.

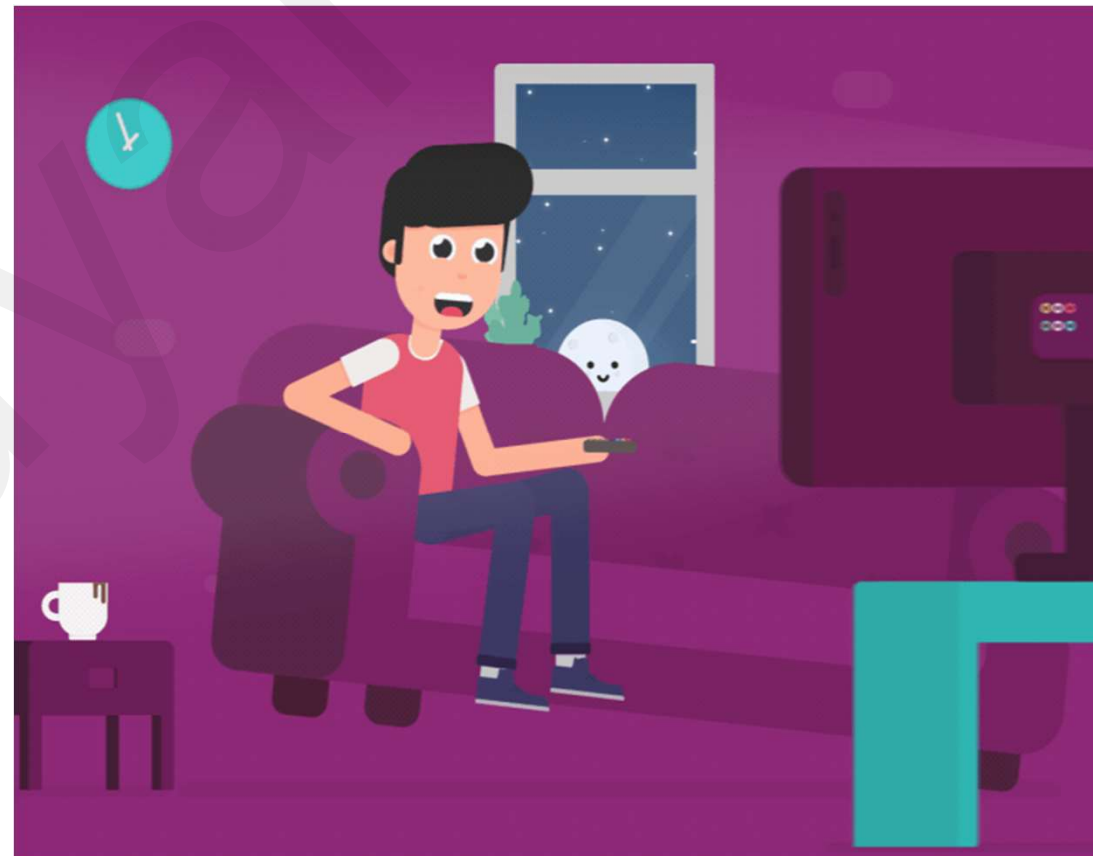
❑ **ANSWER:** Modern technology has trapped the whole world in its fist. With the advancement of communication and information technology the world has contracted.



CLASS VII CH 7 HUMAN ENVIRONMENT - SETTLEMENT, TRANSPORT AND COMMUNICATION (NCERT)

www.evidyarthi.in

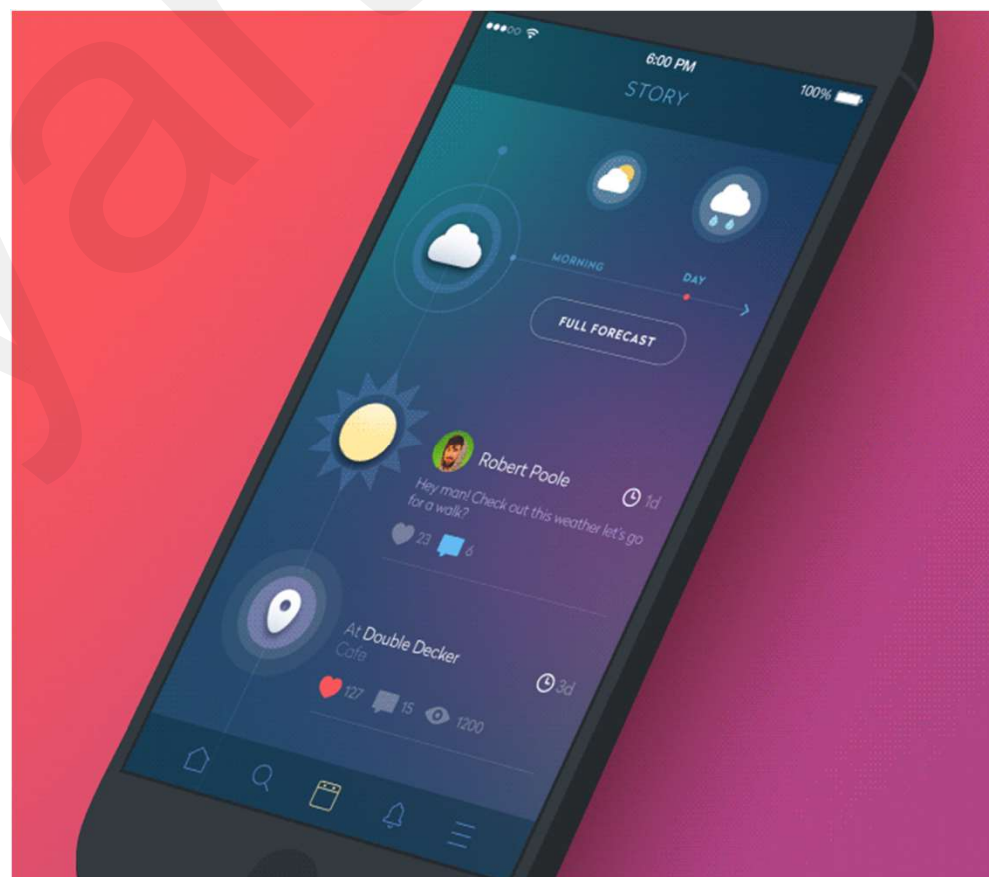
- ❑ We can get the news of a far off land just with a blink of our eyes. England or America or even Moon or Mars are not now far from us. Newspapers, radio and television have brought a revolution in communication.



CLASS VII CH 7 HUMAN ENVIRONMENT - SETTLEMENT, TRANSPORT AND COMMUNICATION (NCERT)

www.evidyarthi.in

- ❑ The satellites have made them even faster. Wireless telephonic communications through cellular phones have become more popular today. The use of internet has made everything available in our plates. So, it is not exaggerating to say that today's world is shrinking.



<https://www.evidyarthi.in>