

CLASS VII CHAPTER 9 LIFE IN THE DESERTS

www.evidyarthi.in



CLASS VII CHAPTER 9 LIFE IN THE DESERTS

www.evidyarthi.in

1. Answer the following questions briefly:

(a) What are the two types of deserts found in the world?

ANSWER:

- The two types of deserts found in the world are hot deserts and cold deserts.



CLASS VII CHAPTER 9 LIFE IN THE DESERTS

www.evidyarthi.in

(b) In which continent is the Sahara desert located?

ANSWER:

- The Sahara desert is located in Africa.



CLASS VII CHAPTER 9 LIFE IN THE DESERTS

www.evidyarthi.in

(c) What are the climatic conditions of the Ladakh desert?

- The climate of the Ladakh desert is extremely cold and dry due to its high attitude which varies from about 3,000 m in Kargil to more than 8,000 m in the Karakoram. The air at this attitude is so thin that the heat of the sun can be felt intensely. The day temperatures in summer are just above zero degree and the night temperatures are below -30°C .

CLASS VII CHAPTER 9 LIFE IN THE DESERTS

www.evidyarthi.in

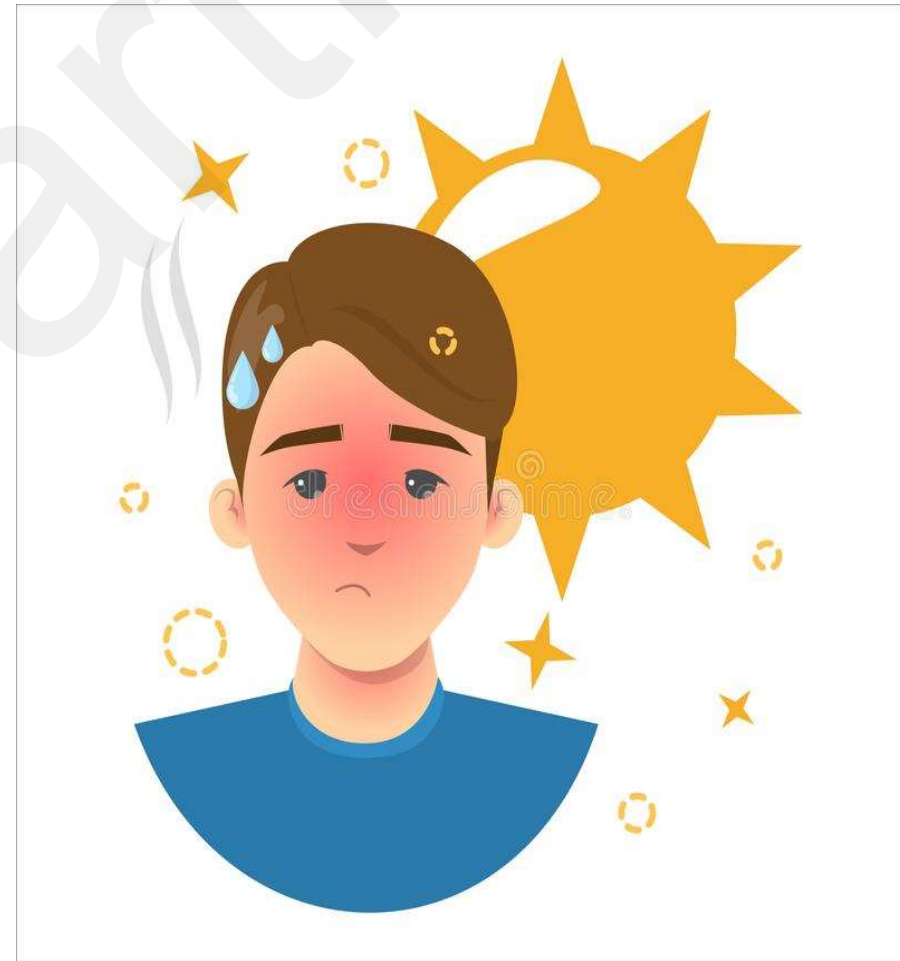


<https://www.evidyarthi.in>

CLASS VII CHAPTER 9 LIFE IN THE DESERTS

www.evidyarthi.in

Winters are extremely cold with temperatures below -40°C for most of the time. There is very little rainfall in this region. It is as low as 10 cm every year. The area experiences freezing winds and burning hot sunlight. There is always a chance of sunstroke and frost bite at the same time.



CLASS VII CHAPTER 9 LIFE IN THE DESERTS

www.evidyarthi.in

(d) What mainly attracts tourists to Ladakh?

- Ladakh is a famous tourist place. The tourists from within the country and abroad enjoy visiting Buddhist monasteries that dot the Ladakhi landscape with their traditional gompas.

The meadows and glaciers in Ladakh also attract these tourists. The ceremonies and festivities in which the local people keep themselves engaged during winter months are great attractions to the tourists.

CLASS VII CHAPTER 9 LIFE IN THE DESERTS

www.evidyarthi.in

(e) What type of clothes the people of the Sahara desert wear?

➤ **ANSWER:** The people of the Sahara desert wear heavy clothes.



CLASS VII CHAPTER 9 LIFE IN THE DESERTS

www.evidyarthi.in

(f) Name the trees that grow in Ladakh

ANSWER: Scanty patches of grasses and shrubs, groves of willows and poplars, fruit trees such as apples, apricots and walnuts.



<https://www.evidyarthi.in>

CLASS VII CHAPTER 9 LIFE IN THE DESERTS

www.evidyarthi.in



<https://www.evidyarthi.in>

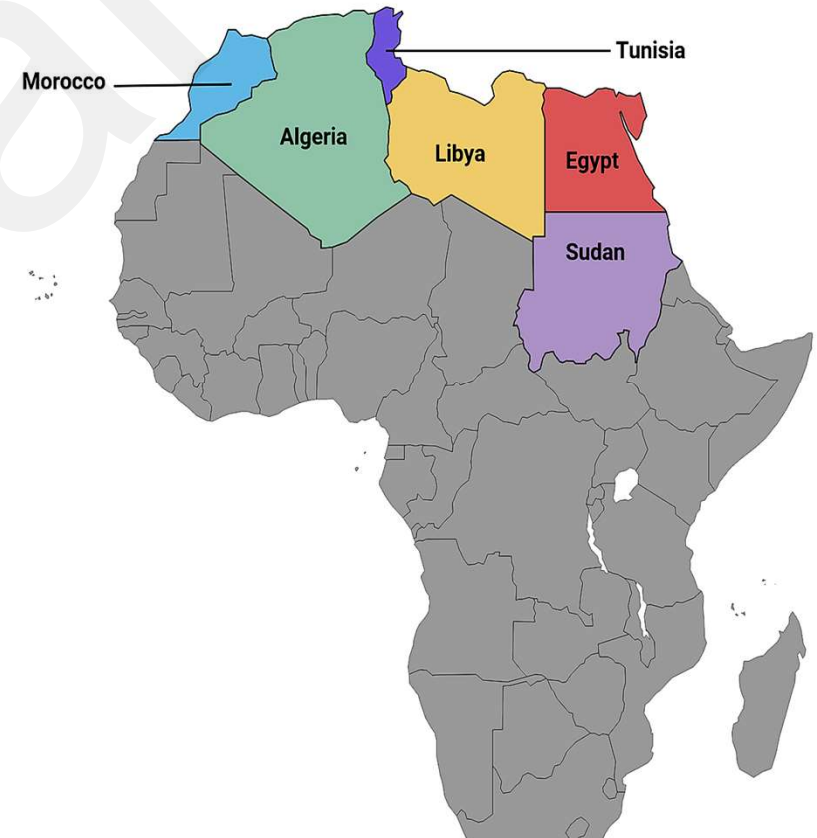
CLASS VII CHAPTER 9 LIFE IN THE DESERTS

www.evidyarthi.in

2. Tick the correct answer:

(i) Sahara is located in which part of Africa?

- (A) EASTERN
- (B) NORTHERN
- (C) WESTERN.



CLASS VII CHAPTER 9 LIFE IN THE DESERTS

www.evidyarthi.in

(ii) Sahara is what type of desert?

(A) COLD

(B) HOT

(C) MILD.



<https://www.evidyarthi.in>

CLASS VII CHAPTER 9 LIFE IN THE DESERTS

www.evidyarthi.in

(iii) The Ladakh desert is mainly inhabited by

(A) CHRISTIANS AND MUSLIMS

(B) BUDDHISTS AND MUSLIMS

(C) CHRISTIANS AND BUDDHISTS.



CLASS VII CHAPTER 9 LIFE IN THE DESERTS

www.evidyarthi.in

(iv) Deserts are characterized by

.....

(A) SCANTY VEGETATION

(B) HEAVY PRECIPITATION

(C) LOW EVAPORATION.



CLASS VII CHAPTER 9 LIFE IN THE DESERTS

www.evidyarthi.in

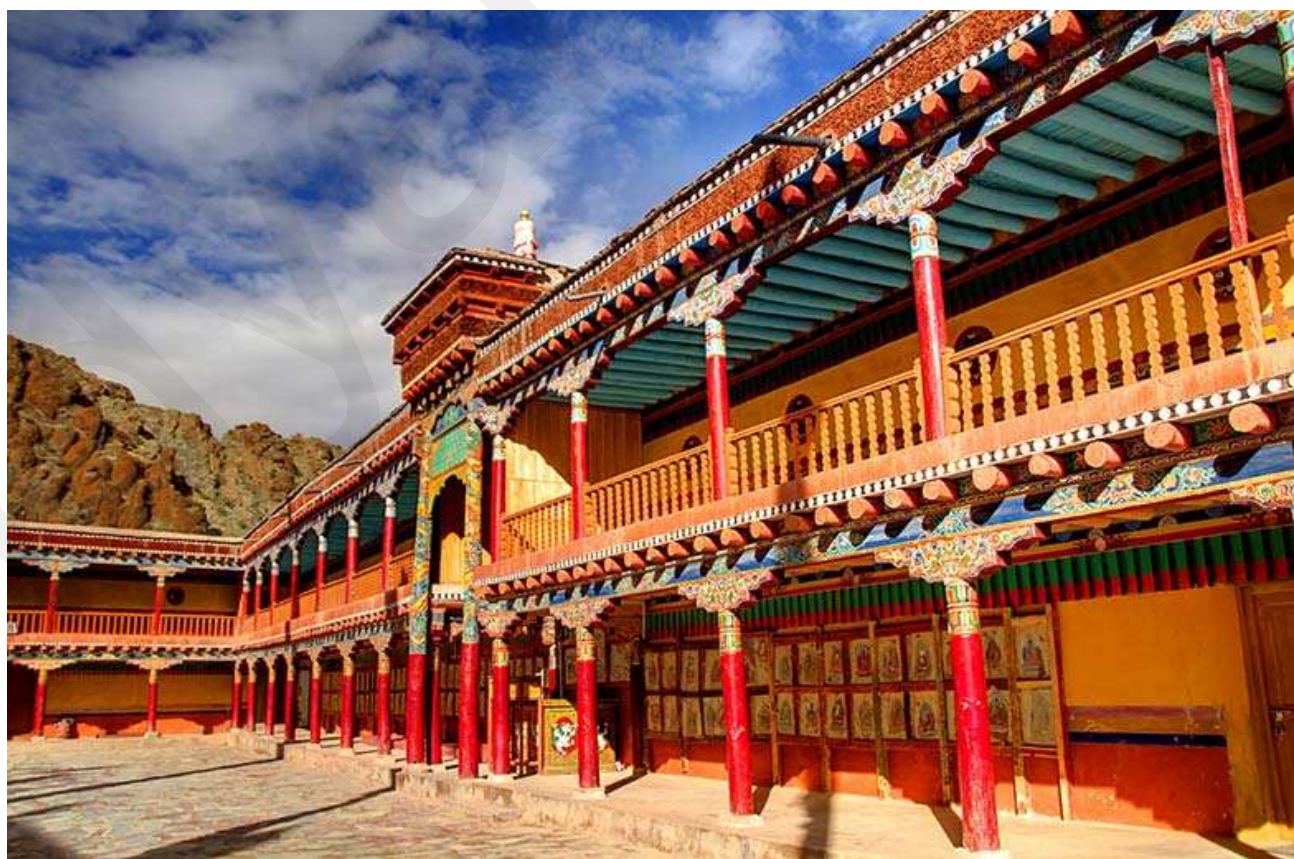
(v) Hemis in Ladakh is a famous

.....

(A) TEMPLE

(B) CHURCH

(C) MONASTERY.



<https://www.evidyarthi.in>

CLASS VII CHAPTER 9 LIFE IN THE DESERTS

www.evidyarthi.in

❑ ANSWER:

- (I) – (B)
- (II) – (B)
- (III) – (B)
- (IV) – (A)
- (V) – (C)
- (VI) – (C).



CLASS VII CHAPTER 9 LIFE IN THE DESERTS

www.evidyarthi.in

4. Give reasons:

(i) There is scanty vegetation in the deserts.

ANSWER: The climate of the deserts is either very hot and dry or very cold and dry. Both the conditions are not favorable for the growth of vegetation. Besides this, there is poor rainfall in the deserts. Due to lack of sufficient water, deserts usually have scanty vegetation.



<https://www.evidyarthi.in>

CLASS VII CHAPTER 9 LIFE IN THE DESERTS

www.evidyarthi.in

(ii) People of the Sahara desert wear heavy robes.

➤ **ANSWER:** People of the Sahara deserts wear heavy robes in order to protect themselves from the dust storms and hot winds.



CLASS VII CHAPTER 9 LIFE IN THE DESERTS

www.evidyarthi.in

9. 3. Match the following:

- | | |
|---------------|----------------------------|
| (i) Oasis | (a) Libya |
| (ii) Bedouins | (b) Monastery |
| (iii) Oil | (c) glacier |
| (iv) Gangri | (d) depressions with water |
| (v) Lamayura | (e) cold desert |
| | (f) Sahara |

CLASS VII CHAPTER 9 LIFE IN THE DESERTS

www.evidyarthi.in

ANSWER

(1) - D

(2) - F

(3) - A

(4) - C

(5) - B

