

EXERCISES

www.evidyarthi.in

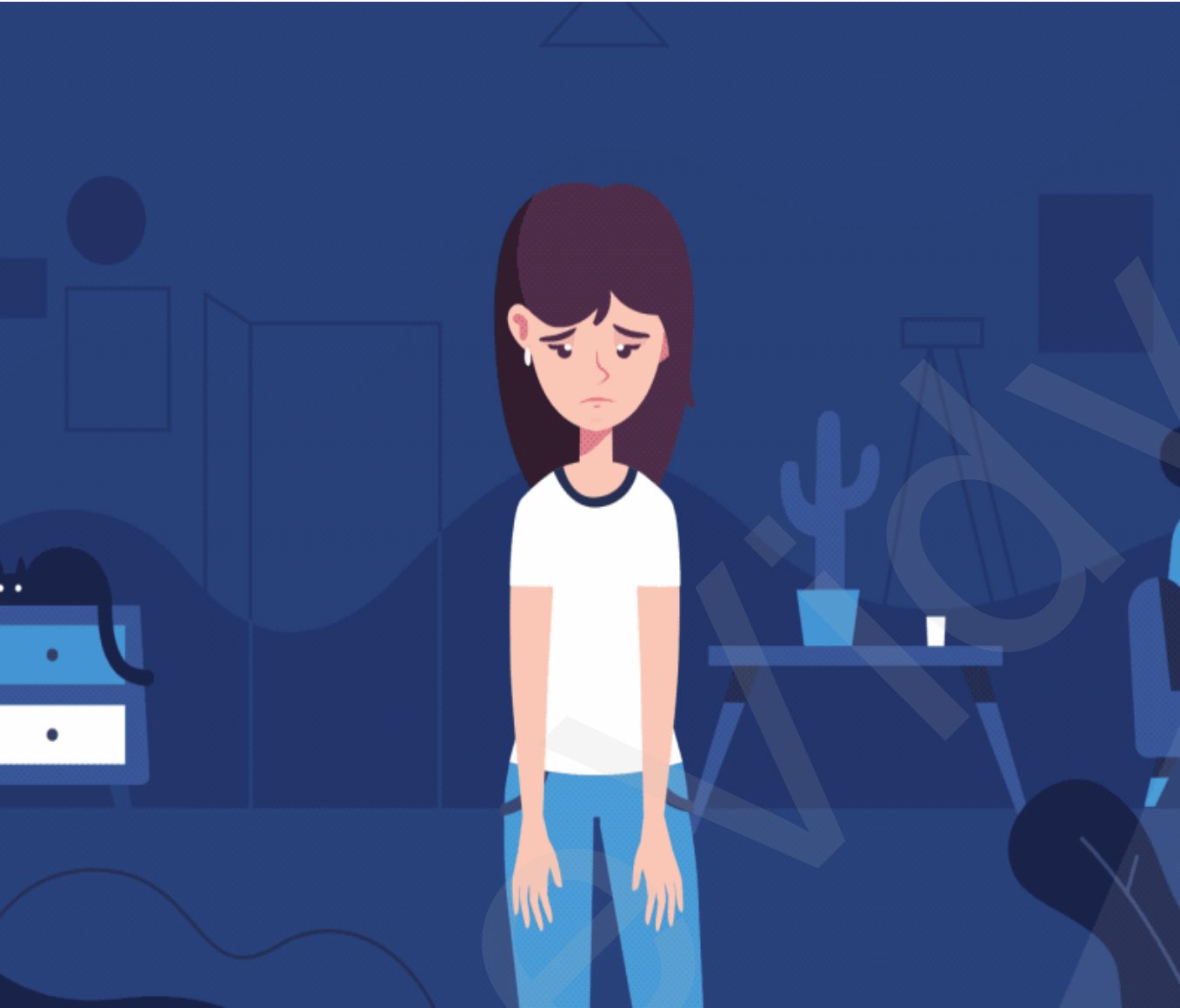
Question 1. Write in your own words two or more sentences of what you understand by the word 'marginalization'.

Answer: Marginalization is the social process of being confined to a lower social standing. Marginalization involves people not getting importance and treated differently.



CLASS VIII CH 5 UNDERSTANDING MARGINALISATION (NCERT)

www.evidyarthi.in



Question 2. List two reasons why Adivasis are becoming increasingly marginalized.

Answer: The Adivasis are portrayed negatively as exotic, primitive and backward people and are represented through colorful costumes and headgears. This has led to the marginalization of this community in modern India.



PRIMITIVE AND BACKWARD

www.evidyarthi.in



TRIBES OF LADAKH

www.evidyarthi.in



CLASS VIII CH 5 UNDERSTANDING MARGINALISATION (NCERT)

TRIBES OF 7 SISTERS

www.evidyarthi.in



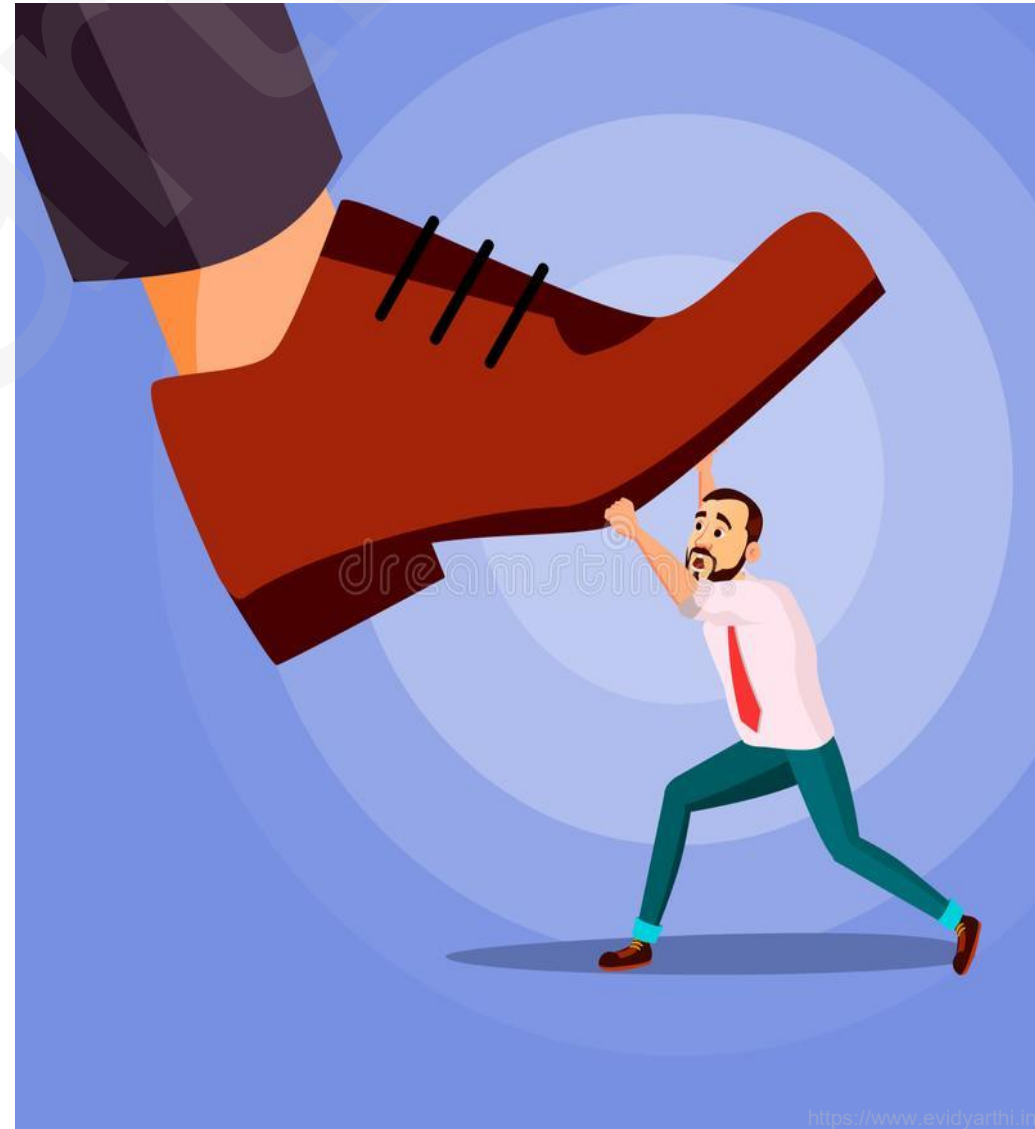
TRIBES OF RAJASTHAN

www.evidyarthi.in



Question 3. Write one reason why you think the Constitution's safeguards to protect minority communities are very important?

Answer: Safeguards are needed to protect minority communities against the possibility of being culturally dominated by the majority and being marginalized.



Question 4.

Re-read the section on Minorities and Marginalization. What do you understand by the term minority?

Answer: The term minority is most commonly used to refer to communities that are numerically small in relation to the rest of the population along with constitution safeguards fundamental rights where they should not face discrimination.

human

rights

CLASS VIII CH 5 UNDERSTANDING MARGINALISATION (NCERT)

MINORITY

www.evidyarthi.in



Question 5. Would you agree with the statement that economic and social marginalization are interlinked? Why?

Answer: Yes, economic and social marginalization is interlinked. When Adivasis were displaced from their lands, they lost much more than a source of income. They lost their traditions and customs – a way of living and being. Destruction in one sphere impacts the other.

SOCIALLY



ECONOMICALLY

