

CLASS VII CHAPTER 7 HUMAN ENVIRONMENT SETTLEMENT, TRANSPORT AND COMMUNICATION (NCERT)

www.evidyarthi.in

TOPICS:



INTRODUCTION



URBAN AND RURAL
SETTLEMENTS



TRANSPORT



ROADWAYS

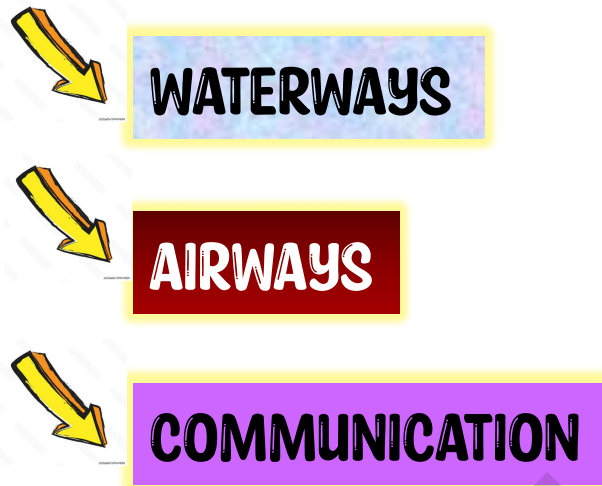


RAILWAYS



CLASS VII CH 7 HUMAN ENVIRONMENT SETTLEMENT, TRANSPORT AND COMMUNICATION (NCERT)

www.evidyarthi.in



CLASS VII CHAPTER 7 HUMAN ENVIRONMENT SETTLEMENT, TRANSPORT AND COMMUNICATION (NCERT)

www.evidyarthi.in

INTRODUCTION

- At first humans were dependent on nature for everything.
- Slowly they started developing and modified their environment.
- **SETTLEMENTS** – many people live in the forests, hot and cold deserts and mountain with this they practiced hunting, gathering, fishing, trading.



CLASS VII CHAPTER 7 HUMAN ENVIRONMENT SETTLEMENT, TRANSPORT AND COMMUNICATION (NCERT)

www.evidyarthi.in



<https://www.evidyarthi.in>

CLASS VII CHAPTER 7 HUMAN ENVIRONMENT SETTLEMENT, TRANSPORT AND COMMUNICATION (NCERT)

www.evidyarthi.in



HUNTING, GATHERING, FISHING



<https://www.evidyarthi.in>

CLASS VII CHAPTER 7 HUMAN ENVIRONMENT SETTLEMENT, TRANSPORT AND COMMUNICATION (NCERT)

www.evidyarthi.in

- **PERMANENT SETTLEMENT** – people build homes to live in.

❑ **DISCUSSION**

- It was Mary 's birthday party.
- Gurmeet's tragedy.
- Pollution of the city due to vehicles.
- Many people rush to the cities to find jobs, better education etc.(mother)



CLASS VII CHAPTER 7 HUMAN ENVIRONMENT SETTLEMENT, TRANSPORT AND COMMUNICATION (NCERT)

www.evidyarthi.in

- “If so many people keep coming to cities, where will all the people live?”
SAID MARY.
- That’s the reason people live in congested and unhygienic condition with no adequate facility,
SAID THOMAS.



CLASS VII CHAPTER 7 HUMAN ENVIRONMENT SETTLEMENT, TRANSPORT AND COMMUNICATION (NCERT)

www.evidyarthi.in



<https://www.evidyarthi.in>

CLASS VII CHAPTER 7 HUMAN ENVIRONMENT SETTLEMENT, TRANSPORT AND COMMUNICATION (NCERT)

www.evidyarthi.in

- **PRASAD SAID,** “Our village is full of fresh air and space but don’t have well equipped things i.e. good hospitals, cinema, schools etc.



CLASS VII CHAPTER 7 HUMAN ENVIRONMENT SETTLEMENT, TRANSPORT AND COMMUNICATION (NCERT)

www.evidyarthi.in

URBAN AND RURAL SETTLEMENTS

- ❑ **RURAL** – villages are rural settlements where people are engaged in agriculture, fishing, forestry, crafts etc.
- **CAN BE COMPACT OR SCATTERED.**
- **COMPACT** – closely built area of dwellings where flat land is available.



CLASS VII CHAPTER 7 HUMAN ENVIRONMENT SETTLEMENT, TRANSPORT AND COMMUNICATION (NCERT)

www.evidyarthi.in

- **SCATTERED** – dwellings are spaced over an extreme area.
- Most found in hilly tracts, thick forest, regions with extreme climate.
- People built houses to suit their environment.
- In region with heavy rainfall, they have houses on stilts with slanty roofs.



CLASS VII CHAPTER 7 HUMAN ENVIRONMENT SETTLEMENT, TRANSPORT AND COMMUNICATION (NCERT)

www.evidyarthi.in



<https://www.evidyarthi.in>

CLASS VII CHAPTER 7 HUMAN ENVIRONMENT SETTLEMENT, TRANSPORT AND COMMUNICATION (NCERT)

www.evidyarthi.in

- **HOT CLIMATE** – thick mudded houses with thatched roofs.
- **MATERIAL** – straw, clay, mud, stones.

URBAN

- Cities are large in urban settlements.
- People are engaged in manufacturing, trading and services.

CLASS VII CHAPTER 7 HUMAN ENVIRONMENT SETTLEMENT, TRANSPORT AND COMMUNICATION (NCERT)

www.evidyarthi.in



<https://www.evidyarthi.in>

CLASS VII CHAPTER 7 HUMAN ENVIRONMENT SETTLEMENT, TRANSPORT AND COMMUNICATION (NCERT)

www.evidyarthi.in

BANGALORE

URBAN AREAS



<https://www.evidyarthi.in>

CLASS VII CHAPTER 7 HUMAN ENVIRONMENT SETTLEMENT, TRANSPORT AND COMMUNICATION (NCERT)

www.evidyarthi.in

TRANSPORT

- It is mean by which people and goods move.
- It was difficult in early days to cover long distances.
- Wheels made transport easier.
- People even today still use animals for transport.



CLASS VII CHAPTER 7 HUMAN ENVIRONMENT SETTLEMENT, TRANSPORT AND COMMUNICATION (NCERT)

www.evidyarthi.in



<https://www.evidyarthi.in>

CLASS VII CHAPTER 7 HUMAN ENVIRONMENT SETTLEMENT, TRANSPORT AND COMMUNICATION (NCERT)

www.evidyarthi.in

- **EX** – donkeys, mules, bullocks, camels etc.
- **LLAMAS ARE USED IN ANT MOUNTAINS OF NORTH AMERICA (YAKS IN TIBET).**
- In early days people travel in different countries via sea routes or land routes.
- Modern means of transport saves time and energy
- **EX** – aero plane, car, railways, waterways.

CLASS VII CHAPTER 7 HUMAN ENVIRONMENT SETTLEMENT, TRANSPORT AND COMMUNICATION (NCERT)

www.evidyarthi.in



<https://www.evidyarthi.in>

CLASS VII CHAPTER 7 HUMAN ENVIRONMENT SETTLEMENT, TRANSPORT AND COMMUNICATION (NCERT)

www.evidyarthi.in



<https://www.evidyarthi.in>

CLASS VII CHAPTER 7 HUMAN ENVIRONMENT SETTLEMENT, TRANSPORT AND COMMUNICATION (NCERT)

www.evidyarthi.in

ROADWAYS

- The most commonly used means of transport for short distance are roads. (metalled – **PACCA**, unmetalled – **KUTCHA**).
- Roads built on forest, mountains, plains, desert.
- **MANALI – LEH** highway in the Himalayan mountain is the highest roadway in the world.



CLASS VII CHAPTER 7 HUMAN ENVIRONMENT SETTLEMENT, TRANSPORT AND COMMUNICATION (NCERT)

www.evidyarthi.in



<https://www.evidyarthi.in>

CLASS VII CHAPTER 7 HUMAN ENVIRONMENT SETTLEMENT, TRANSPORT AND COMMUNICATION (NCERT)

www.evidyarthi.in



<https://www.evidyarthi.in>

CLASS VII CHAPTER 7 HUMAN ENVIRONMENT SETTLEMENT, TRANSPORT AND COMMUNICATION (NCERT)

www.evidyarthi.in

- Underground built roads are called as **SUBWAY**/under paths.
- **FLYOVERS** are built over raised structures.

CLASS VII CHAPTER 7 HUMAN ENVIRONMENT SETTLEMENT, TRANSPORT AND COMMUNICATION (NCERT)

www.evidyarthi.in

SUBWAYS



FLYOVERS



<https://www.evidyarthi.in>

CLASS VII CHAPTER 7 HUMAN ENVIRONMENT SETTLEMENT, TRANSPORT AND COMMUNICATION (NCERT)

RAILWAYS

www.evidyarthi.in

- Railways carry goods and people over a long distance quickly and cheaply.
- Invention of steam engines and industries helps boost the development of rail transport.
- Super fast trains took place of steam engines to make the journey faster.



CLASS VII CHAPTER 7 HUMAN ENVIRONMENT SETTLEMENT, TRANSPORT AND COMMUNICATION (NCERT)

www.evidyarthi.in

- Indian railways have the largest networks in the whole Asia.
- Railways networks are spreaded even in hilly mountains areas.



CLASS VII CHAPTER 7 HUMAN ENVIRONMENT SETTLEMENT, TRANSPORT AND COMMUNICATION (NCERT)

www.evidyarthi.in

WATERWAYS

- It is used in the early days also known as the cheapest for carrying heavy goods for long distances.
- Two types.
- Inland water ways and sea routes.



<https://www.evidyarthi.in>

CLASS VII CHAPTER 7 HUMAN ENVIRONMENT SETTLEMENT, TRANSPORT AND COMMUNICATION (NCERT)

www.evidyarthi.in

- ❑ **INLAND** – navigable rivers and lakes are used as inland waterways.
- **EX** – ganga Brahmaputra's river system, Nile in Africa, great lakes in north America.
- ❑ **SEA ROUTES** – These routes are used for transportation in one country to another. They are connected with the ports.



CLASS VII CHAPTER 7 HUMAN ENVIRONMENT SETTLEMENT, TRANSPORT AND COMMUNICATION (NCERT)

www.evidyarthi.in

❑ IMPORTANT PORTS

- Singapore and Mumbai in Asia.
- New York
- Los Angeles in North America.
- Rio de Janeiro in South America.
- Durban and Cape Town in Africa.
- Sydney in Australia.
- London and Rotterdam in Europe.

CLASS VII CHAPTER 7 HUMAN ENVIRONMENT SETTLEMENT, TRANSPORT AND COMMUNICATION (NCERT)

www.evidyarthi.in



<https://www.evidyarthi.in>

CLASS VII CHAPTER 7 HUMAN ENVIRONMENT SETTLEMENT, TRANSPORT AND COMMUNICATION (NCERT)

www.evidyarthi.in

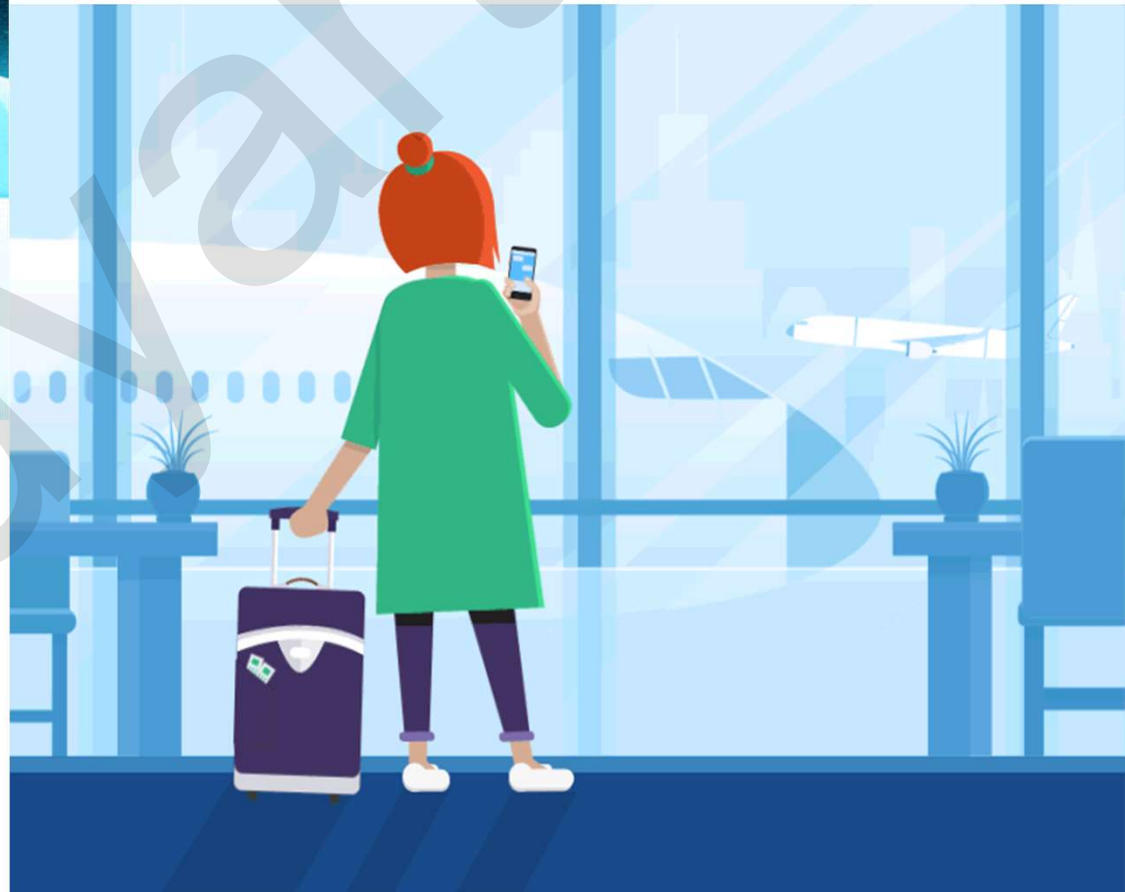
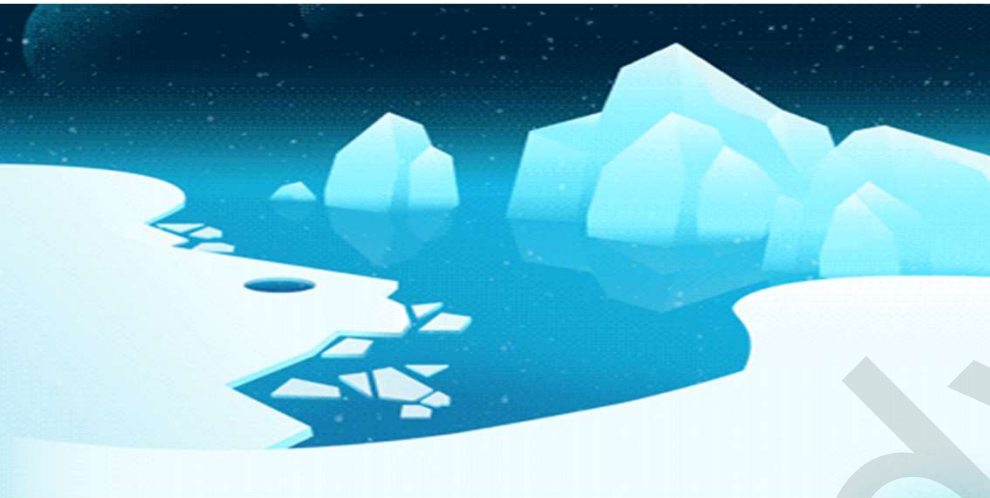
AIRWAYS

- Fastest way of transport in the early 20th century.
- Most expensive and high cost of fuels.
- Bad weather, Storm and fog are affecting criteria's.
- Daily mode of transport to reach the remote and distant areas



CLASS VII CHAPTER 7 HUMAN ENVIRONMENT SETTLEMENT, TRANSPORT AND COMMUNICATION (NCERT)

www.evidyarthi.in



<https://www.evidyarthi.in>

CLASS VII CHAPTER 7 HUMAN ENVIRONMENT SETTLEMENT, TRANSPORT AND COMMUNICATION (NCERT)

www.evidyarthi.in

BAD WEATHER



<https://www.evidyarthi.in>

CLASS VII CHAPTER 7 HUMAN ENVIRONMENT SETTLEMENT, TRANSPORT AND COMMUNICATION (NCERT)

www.evidyarthi.in

- Helicopters are extremely useful in accessible areas and in time of calamities for rescuing people, distributing **FOOD, WATER, CLOTHS AND MEDICINES**.
- **IMPORTANT AIRPORT** – Cairo, Paris, Frankfurt, London, New York, Delhi, Mumbai.



CLASS VII CHAPTER 7 HUMAN ENVIRONMENT SETTLEMENT, TRANSPORT AND COMMUNICATION (NCERT)

www.evidyarthi.in

RESCUE OPERATIONS



<https://www.evidyarthi.in>

CLASS VII CHAPTER 7 HUMAN ENVIRONMENT SETTLEMENT, TRANSPORT AND COMMUNICATION (NCERT)

www.evidyarthi.in

COMMUNICATION

- Process of conveying messages to others.
- The advancement in the field of communication has brought a revolution in the world.
- Through newspaper radio, television we can communicate with large number of people. Therefore called mass media.



CLASS VII CHAPTER 7 HUMAN ENVIRONMENT SETTLEMENT, TRANSPORT AND COMMUNICATION (NCERT)

www.evidyarthi.in



<https://www.evidyarthi.in>

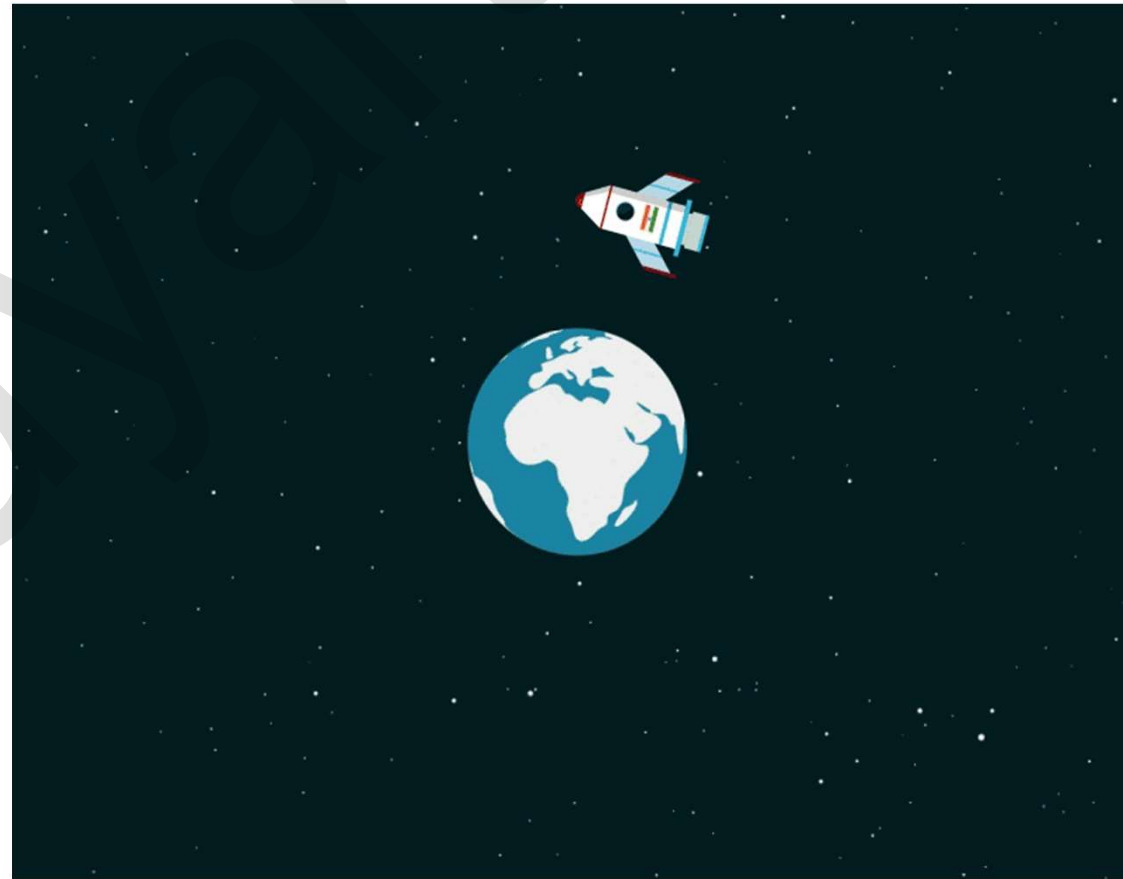
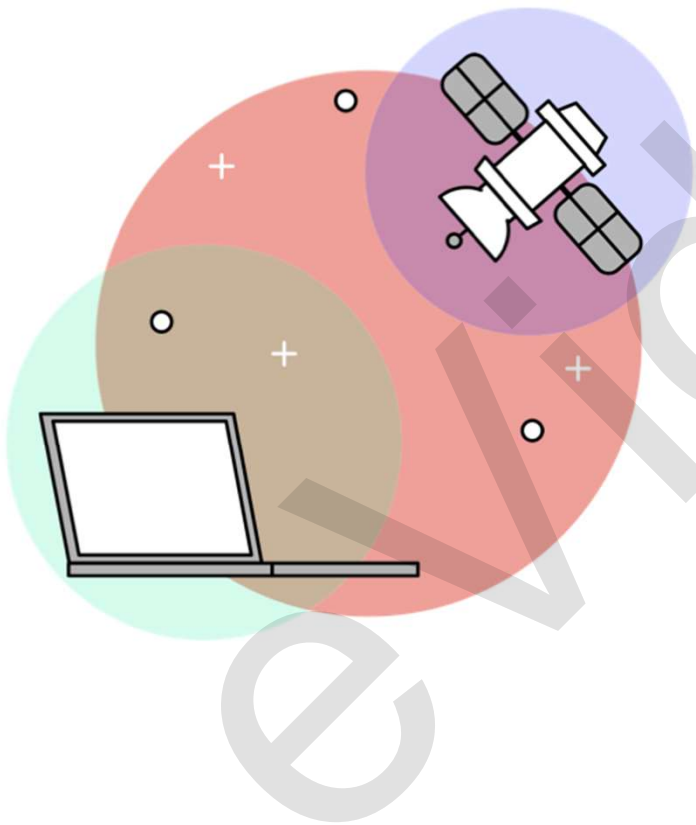
CLASS VII CHAPTER 7 HUMAN ENVIRONMENT SETTLEMENT, TRANSPORT AND COMMUNICATION (NCERT)

www.evidyarthi.in

- **SATELLITES HAVE MADE COMMUNICATION EVEN FASTER. HELPED IN OIL EXPLORATION, SURVEY OF FOREST, UNDERGROUND WATER, MINERAL WEALTH, WEATHER FORECAST AND DISASTER WARNING.**
- **Wireless telephonic communications through cellular phones have become very popular today.**

CLASS VII CHAPTER 7 HUMAN ENVIRONMENT SETTLEMENT, TRANSPORT AND COMMUNICATION (NCERT)

www.evidyarthi.in



<https://www.evidyarthi.in>

CLASS VII CHAPTER 7 HUMAN ENVIRONMENT SETTLEMENT, TRANSPORT AND COMMUNICATION (NCERT)

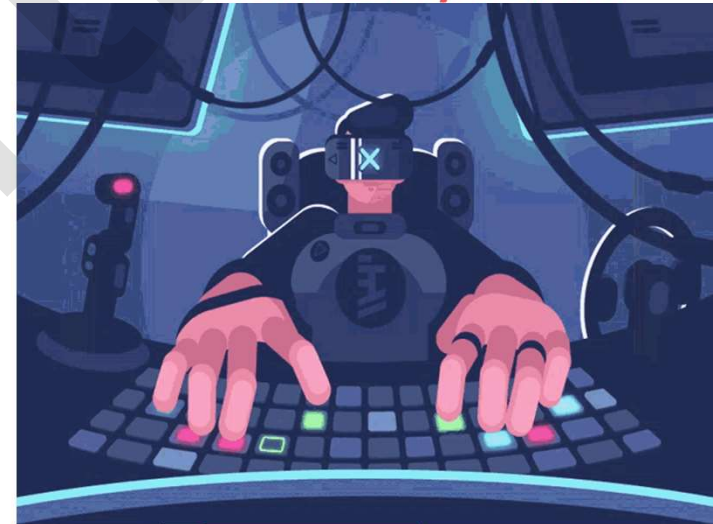
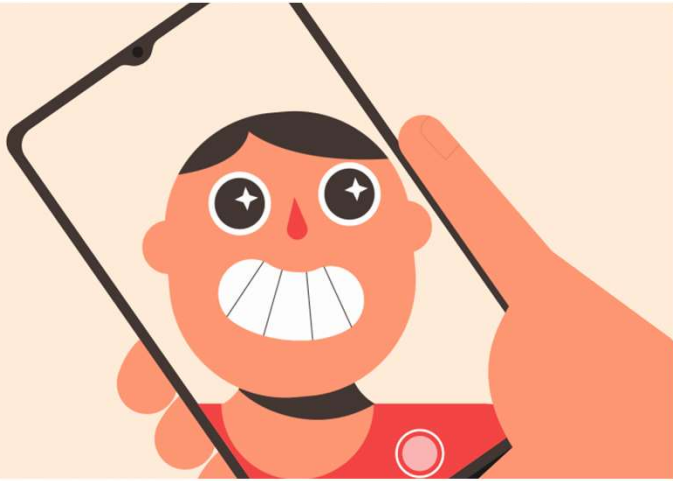
www.evidyarthi.in

- Now we can reserve tickets for railways, airways and even cinemas and hotels sitting at home. We are now a global society with easy lives.



CLASS VII CHAPTER 7 HUMAN ENVIRONMENT SETTLEMENT, TRANSPORT AND COMMUNICATION (NCERT)

www.evidyarthi.in



<https://www.evidyarthi.in>