

CLASS VII CHAPTER 6 HUMAN ENVIRONMENT INTERACTION THE TROPICAL AND THE SUBTROPICAL REGION (NCERT)

www.evidyarthi.in

TOPICS:



INTRODUCTION



**LIFE IN THE
AMAZON BASIN**



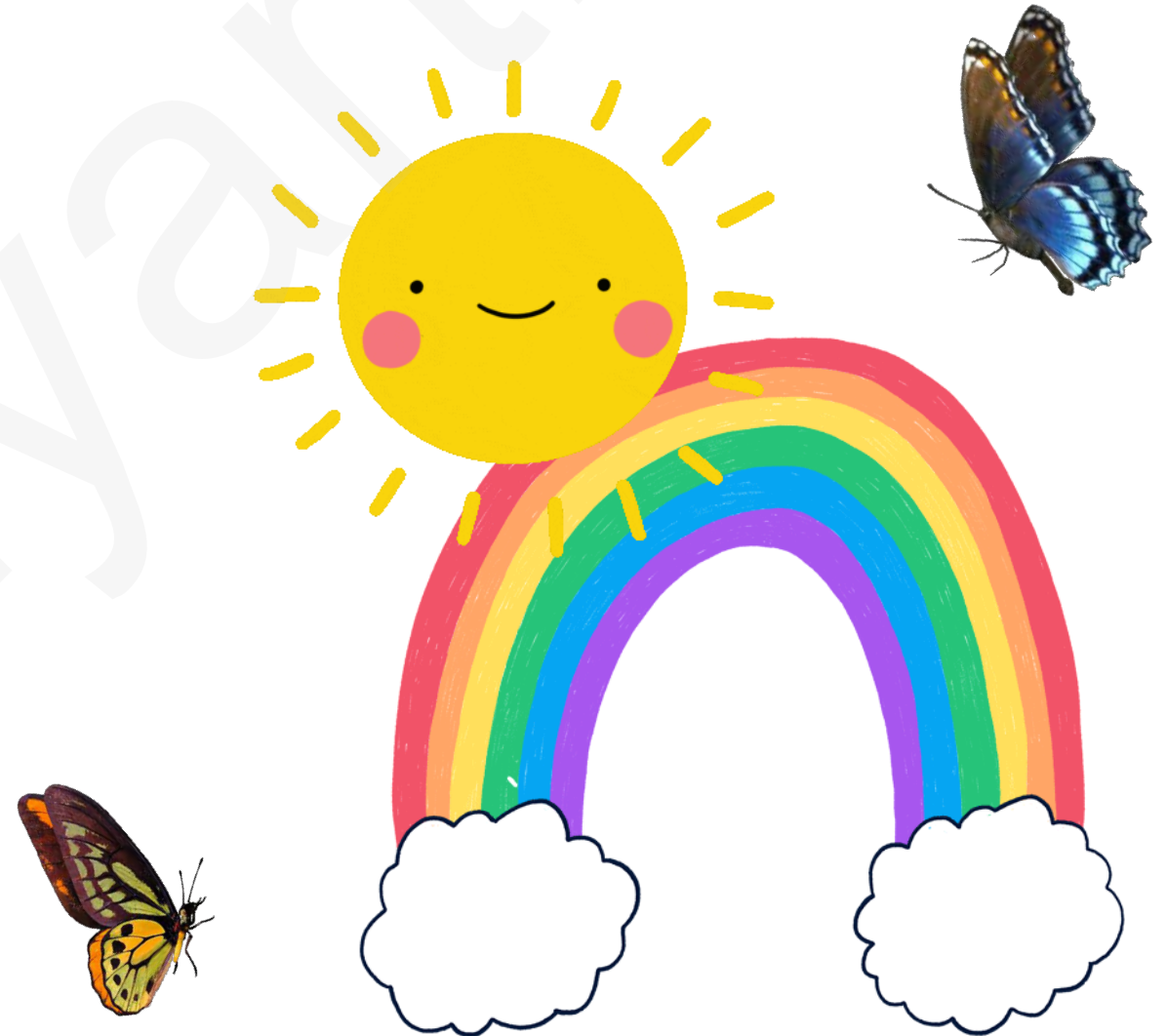
CLIMATE



RAINFORESTS



PEOPLE OF THE RAINFOREST



CLASS VII CHAPTER 6 HUMAN ENVIRONMENT INTERACTION THE TROPICAL AND THE SUBTROPICAL REGION (NCERT)

www.evidyarthi.in



**LIFE IN THE GANGA –
BRAHMAPUTRA BASIN**



CLASS VII CHAPTER 6 HUMAN ENVIRONMENT INTERACTION THE TROPICAL AND THE SUBTROPICAL REGION (NCERT)

www.evidyarthi.in

INTRODUCTION

- **STORY OF RENUKA.**
- Uncle Shrikant was coming after 4 months (**WILDLIFE PHOTOGRAPHER**)
- She has a keen interest in nature from a very early age.
- **SHRIKANT EXPLAINED** – the people live in the nature,



CLASS VII CHAPTER 6 HUMAN ENVIRONMENT INTERACTION THE TROPICAL AND THE SUBTROPICAL REGION (NCERT)

www.evidyarthi.in

- Maybe different in appearance but share some basic and common needs of life like shelter, clothing, food, help family.
- In chapter 8,9,10 we will learn about different natural regions of the world.



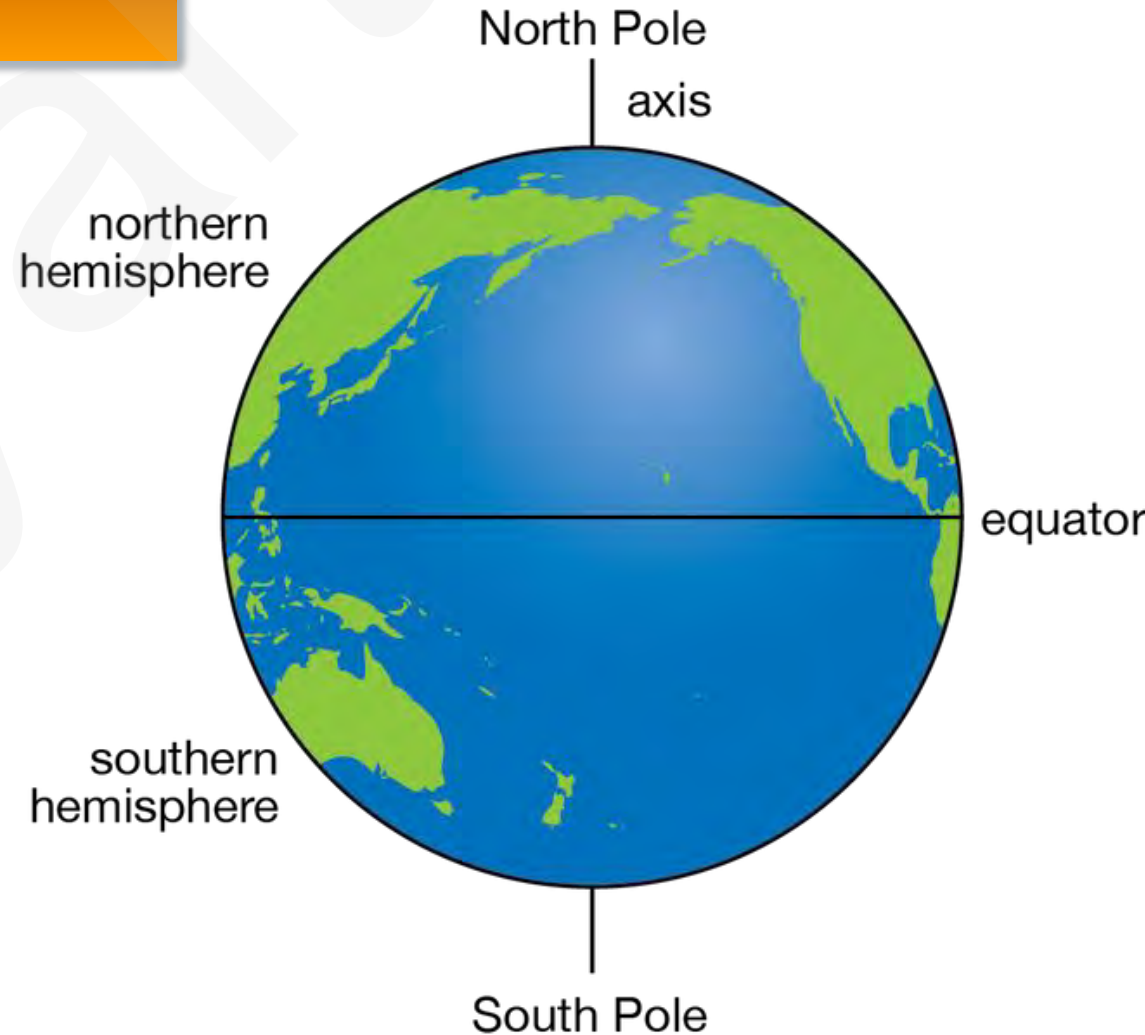
CLASS VII CHAPTER 6 HUMAN ENVIRONMENT INTERACTION

THE TROPICAL AND THE SUBTROPICAL REGION (NCERT)

www.evidyarthi.in

Life in the amazon basin

- Tropical region lies near the equator. It is referred as the equatorial region. **(AMAZON RIVERS FLOWS HERE)**
- It flows in the mountain to the west and reaches the Atlantic ocean to the east.



CLASS VII CHAPTER 6 HUMAN ENVIRONMENT INTERACTION THE TROPICAL AND THE SUBTROPICAL REGION (NCERT)

www.evidyarthi.in



CLASS VII CHAPTER 6 HUMAN ENVIRONMENT INTERACTION

THE TROPICAL AND THE SUBTROPICAL REGION (NCERT)

www.evidyarthi.in

- **RIVER MOUTH** – the place where the river flows into another body of water.
- Numerous tributaries join amazon river to form amazon basin.
- The river basin drain portion of **BRAZIL, PARTS OF PERU, BOLIVIA, EQUATOR, COLUMBIA, SMALL PART OF VENEZUELA.**



CLASS VII CHAPTER 6 HUMAN ENVIRONMENT INTERACTION THE TROPICAL AND THE SUBTROPICAL REGION (NCERT)

www.evidyarthi.in



☐ **AMAZON
RAINFOREST
OF BRAZIL**

CLASS VII CHAPTER 6 HUMAN ENVIRONMENT INTERACTION

THE TROPICAL AND THE SUBTROPICAL REGION (NCERT)

www.evidyarthi.in

climate

- Amazon basin stretches on the equator with hot and wet climate throughout the year.
- Both equally day and night are hot and humid.
- Rains almost everyday, skin feels sticky (**WITHOUT ANY WARNING IT POURS HEAVILY**).



CLASS VII CHAPTER 6 HUMAN ENVIRONMENT INTERACTION THE TROPICAL AND THE SUBTROPICAL REGION (NCERT)

www.evidyarthi.in

- **DAY TEMPERATURE** – high with very high humidity.
- **NIGHT TEMPERATURE** – down but humidity remains high.

too...
hot...



CLASS VII CHAPTER 6 HUMAN ENVIRONMENT INTERACTION

THE TROPICAL AND THE SUBTROPICAL REGION (NCERT)

www.evidyarthi.in

rainforests

- Due to heavy rain in this region thick forest grow. (**SUNLIGHT DOES NOT ENTER**).
- The ground remains dark and damp. only shade tolerant vegetation grows here.
- **EX** – orchids, bromeliads, (plant parasite)



CLASS VII CHAPTER 6 HUMAN ENVIRONMENT INTERACTION THE TROPICAL AND THE SUBTROPICAL REGION (NCERT)

www.evidyarthi.in



CLASS VII CHAPTER 6 HUMAN ENVIRONMENT INTERACTION

THE TROPICAL AND THE SUBTROPICAL REGION (NCERT)

www.evidyarthi.in

- Rainforests are rich in fauna.
- **BIRDS – TOUCANS, HUMMING BIRD, BIRD OF PARADISE.**
- These birds eat plenty here along with creates loud sounds in the forest.
- **ANIMALS – MONKEYS, SLOTH, TAPIRS, REPTILES, SNAKE, CROCODILES, PYTHONS, ANACONDA, BOA.**

PLANT PARASITES



<http://www.evidyarthi.in>

CLASS VII CHAPTER 6 HUMAN ENVIRONMENT INTERACTION THE TROPICAL AND THE SUBTROPICAL REGION (NCERT)

www.evidyarthi.in



CLASS VII CHAPTER 6 HUMAN ENVIRONMENT INTERACTION

THE TROPICAL AND THE SUBTROPICAL REGION (NCERT)

www.evidyarthi.in

SLOTH, TAPIRS, BOA



CLASS VII CHAPTER 6 HUMAN ENVIRONMENT INTERACTION

THE TROPICAL AND THE SUBTROPICAL REGION (NCERT)

www.evidyarthi.in

- It is a home of thousands of species of insects and fish too.
- **EX – FLESH EATING PIRANHA.**
- It has rich and extraordinary variety of life.



CLASS VII CHAPTER 6 HUMAN ENVIRONMENT INTERACTION

THE TROPICAL AND THE SUBTROPICAL REGION (NCERT)

www.evidyarthi.in

People of the rainforest

- People clear some patch of forest and grows food, hunt and fish along the river.
- Women take care of the crops and family.
- **EX – TAPIOCA, PINEAPPLE, SWEET POTATO ETC.**



CLASS VII CHAPTER 6 HUMAN ENVIRONMENT INTERACTION THE TROPICAL AND THE SUBTROPICAL REGION (NCERT)

www.evidyarthi.in



CLASS VII CHAPTER 6 HUMAN ENVIRONMENT INTERACTION

THE TROPICAL AND THE SUBTROPICAL REGION (NCERT)

www.evidyarthi.in

- They practice slash and burn (staple food is **MANIOC** also known as **CASSAVA**) that grows under the ground like the **POTATOES**.
- **ALSO EAT QUEEN ANTS, EGG SACS, COFFEE, MAIZE, COCOA.**
- Rainforest provide lot of wood for houses and some lives in thatched houses and some live in large apartment like houses called maloca with slanty roof.

CLASS VII CHAPTER 6 HUMAN ENVIRONMENT INTERACTION THE TROPICAL AND THE SUBTROPICAL REGION (NCERT)

www.evidyarthi.in



CLASS VII CHAPTER 6 HUMAN ENVIRONMENT INTERACTION THE TROPICAL AND THE SUBTROPICAL REGION (NCERT)

www.evidyarthi.in

CASSAVA



MAIZE



COCOA



CLASS VII CHAPTER 6 HUMAN ENVIRONMENT INTERACTION THE TROPICAL AND THE SUBTROPICAL REGION (NCERT)

www.evidyarthi.in

- Life of people living in amazon is also changing.
- At first they have to follow the river as a navigator to reach the forest.
- In 1970 the trans amazon highway made rainforest accessible.
- Aircraft and helicopter helped too.



CLASS VII CHAPTER 6 HUMAN ENVIRONMENT INTERACTION THE TROPICAL AND THE SUBTROPICAL REGION (NCERT)

www.evidyarthi.in



CLASS VII CHAPTER 6 HUMAN ENVIRONMENT INTERACTION

THE TROPICAL AND THE SUBTROPICAL REGION (NCERT)

www.evidyarthi.in

- Indigenous population was pushed out and forced to settle in new areas where they continued to practice their way of farming.
- Developing activities are leading to gradual destruction of this diverse rainforest.
- Large areas of Amazon are annually disappearing.



CLASS VII CHAPTER 6 HUMAN ENVIRONMENT INTERACTION THE TROPICAL AND THE SUBTROPICAL REGION (NCERT)

www.evidyarthi.in

- This topsoil is getting washed away and lush green forest is becoming.



CLASS VII CHAPTER 6 HUMAN ENVIRONMENT INTERACTION THE TROPICAL AND THE SUBTROPICAL REGION (NCERT)

www.evidyarthi.in

Life in the ganga -
Brahmaputra basin

SUNDER BANS

- Tributaries of Ganga and Brahmaputra together creates gnga Brahmaputra basin in the Indian subcontinent (**LIES IN THE SUBTROPICAL REGION**)
- Tributaries of ganga like the ghaghra,the son ,the Chambal, the gandak,the kosi



CLASS VII CHAPTER 6 HUMAN ENVIRONMENT INTERACTION

THE TROPICAL AND THE SUBTROPICAL REGION (NCERT)

www.evidyarthi.in



CLASS VII CHAPTER 6 HUMAN ENVIRONMENT INTERACTION

THE TROPICAL AND THE SUBTROPICAL REGION (NCERT)

www.evidyarthi.in

And the Brahmaputra tributaries.

- The plains of Ganga, Brahmaputra, mountain, foothills, Himalayas and the Sundarbans delta are the main features of this basin.
- The area is dominated by monsoon, it brings rain from mid June and Sept. Summers are hot and the winters are cool.



CLASS VII CHAPTER 6 HUMAN ENVIRONMENT INTERACTION

THE TROPICAL AND THE SUBTROPICAL REGION (NCERT)

www.evidyarthi.in

- Basin area has varied topography, mountain areas with steep slopes have inhospitable terrain. (**LESS NO. OF PEOPLE LIVE**)
- Plain area provides suitable land for humans (**SOIL IS FERTILE FOR AGRICULTURE**).
- Agriculture is the main occupation of them and density of the population is very high.



CLASS VII CHAPTER 6 HUMAN ENVIRONMENT INTERACTION THE TROPICAL AND THE SUBTROPICAL REGION (NCERT)

www.evidyarthi.in



CLASS VII CHAPTER 6 HUMAN ENVIRONMENT INTERACTION

THE TROPICAL AND THE SUBTROPICAL REGION (NCERT)

www.evidyarthi.in

- Paddy is the main crop and needs area with sufficient water.
- **OTHER CROPS – WHEAT, SORGHUM, GRAM, MILLET** cash crops – **JUTE, SUGARCANE** along with some **BANANA PLANTATION**.
- In Bihar and assam cultivation of **SILK WORMS** are done.



CLASS VII CHAPTER 6 HUMAN ENVIRONMENT INTERACTION THE TROPICAL AND THE SUBTROPICAL REGION (NCERT)

www.evidyarthi.in

WHEAT



SORGHUM



CLASS VII CHAPTER 6 HUMAN ENVIRONMENT INTERACTION THE TROPICAL AND THE SUBTROPICAL REGION (NCERT)

www.evidyarthi.in

SUGARCANE



JUTE



CLASS VII CHAPTER 6 HUMAN ENVIRONMENT INTERACTION THE TROPICAL AND THE SUBTROPICAL REGION (NCERT)

www.evidyarthi.in

SILK WORMS



BANANA PLANTATION



CLASS VII CHAPTER 6 HUMAN ENVIRONMENT INTERACTION

THE TROPICAL AND THE SUBTROPICAL REGION (NCERT)

www.evidyarthi.in

TEAK

- Vegetation is different everywhere according to the type of landforms.
- Tropical deciduous trees grows with **TEAK, SAL, PEEPLE** along with **BAMBOO GROVES**.
- In Uttarakhand, Sikkim, A.P, coniferous trees like pine, deodar, fir are seen (**BECAUSE OF THE COOL CLIMATE AND STEEPS**)



CLASS VII CHAPTER 6 HUMAN ENVIRONMENT INTERACTION THE TROPICAL AND THE SUBTROPICAL REGION (NCERT)

www.evidyarthi.in

BAMBOO

SAL



CLASS VII CHAPTER 6 HUMAN ENVIRONMENT INTERACTION THE TROPICAL AND THE SUBTROPICAL REGION (NCERT)

www.evidyarthi.in

- **WILDLIFE** – elephants, tigers, deer, monkeys, one horned rhino.
- In the delta area tigers and crocodiles and alligator.
- **AQUATIC LIFE** exist in large number in lakes, fresh water river, bay of Bengal sea.
- **EX**– catla, rohu, hilsa(staple food is fish and rice).

CLASS VII CHAPTER 6 HUMAN ENVIRONMENT INTERACTION

THE TROPICAL AND THE SUBTROPICAL REGION (NCERT)

www.evidyarthi.in

- There are many cities and towns of Ganga and Brahmaputra plain like - **ALLAHABAD, KANPUR, VARANASI, LUCKNOW, PATNA AND KOLKATA** all with the population of more than ten lakhs are located along the River Ganga
- wastewater from these towns and industries is discharged into the rivers leads to the pollution of the rivers.

CLASS VII CHAPTER 6 HUMAN ENVIRONMENT INTERACTION

THE TROPICAL AND THE SUBTROPICAL REGION (NCERT)

www.evidyarthi.in

- 4 ways of transport are well developed in the Ganga-Brahmaputra basin – **ROADWAYS, RAILWAYS, WATERWAYS**, is an effective means of transport particularly along the rivers along with it has many airports.

CLASS VII CHAPTER 6 HUMAN ENVIRONMENT INTERACTION THE TROPICAL AND THE SUBTROPICAL REGION (NCERT)

www.evidyarthi.in

- **TOURISM IS ANOTHER IMPORTANT ACTIVITY**
- **BUDDHIST STUPAS IN U.P. AND BIHAR**
- **LUCKNOW WITH IMAM BARA.**
- **ASSAM WITH KAZIRANGA.**
- **MANAS WITH WILDLIFE SANCTUARY.**
- **ARUNACHAL WITH TRIBAL CULTURE ARE WORTH THE VISIT.**
- **TAJ MAHAL IN AGRA (RIVER YAMUNA).**