

## SUMMATIVE ASSESMENT - II

Session – 2015-16

Marking Scheme

1. Sodium by chosen Carbonate 1
2. Topsoil or A – Horizon. 1
3. Earthworm – Moist skin  $\frac{1}{2} + \frac{1}{2} = 1$   
Lock roach - Spiracles
4. Write consists of 95% water 1  
2.5% urea and 2.5% other waste product
5. Electric iron, heater on (any device) 1
6. Concave mirror. 1
7. Waste water Treatment Plant 1
8. Transfer of pollen grains from anther to stigma 1
9. Moisture content in air is higher in coastal areas than the closest,  
So the process of resting is faster in coastal areas. 1
10. Clayey soil – 1 Proportion of fine particles 's Large  $\frac{1}{2} \times 4 = 2$   
- 2 Good water holding capacity.  
Loamy Soil – 1 Proportion of large particles is more  
-2 Poor water holding capacity
11. When we inhale the dust particles or any other pollutant, 2  
They get trapped in the hair present in our nasal cavity,  
sometimes these particles may pass the hair in the nasal cavity.  
Where they inhale the inner lining of the cavity, as a result we  
sneeze, Sneezing expels foreign particles from the inhaled air.
12. Xylem – transport water and mineral. 1+1=2  
Phloem – transport synthesized food
13. Process of food transfer from plants 1+1=2  
through a series of organism.  
Grass → Insects → Frog → Snake → Eagle.  
(Any other food chain)
14. i) Diarrhoea and ii) Jaundice 1+1=
15. a) Chemical Change.  $\frac{1}{2} \times 6 = 3$

- b) Physical Change
- c) Chemical Change
- d) Physical Change
- e) Chemical Change
- f) Physical Change

16. Soil erosion – Removal of top fertile layer of soil by wind or water.  
Prevention – 1 Planting trees. 1+2=3

- 2 Protecting forests (Any other preventive measure)

17. 1/2 x 6 = 3

- a) iii
- b) iv
- c) i
- d) vi
- e) ii
- f) v

18. An image which cannot be obtained on a screen is called a virtual image,  
Real image – 1 Can be obtained on a screen 1+2=3

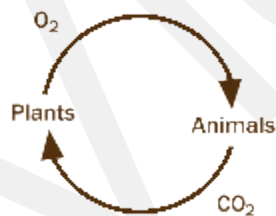
-2 It is always inverted

Virtual image – 1 Cannot be obtained on a screen.

-2 It is always erect.

(Any other difference)

19. Plant release oxygen as by product during photosynthesis and oxygen is inhaled by animals for respiration and carbon dioxide released during respiration plant take Carbon dioxide for they thus maintain oxygen carbon dioxide balance.



20. a) Various methods of asexual reproduction are 3+2=5

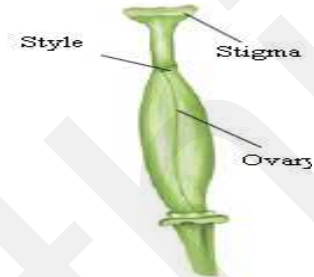
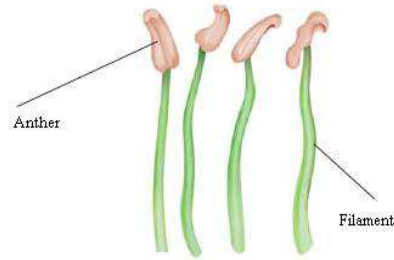
i) Vegetative propagation – when new plant obtained from any vegetative part of plant. example:- Rose (Stem)

ii) Budding – when new plant obtained from bud. example: - Yeast.

iii) Fragmentation – Each fragments of plant body develop into new plant .i.e. – Spirogyra.

iv) Spore formation – Spore germinate and develops into new individual. .i.e. – Bread mould.

b) Diagram of Stamen & pistil.



21. a) A fuse is a safety device, which prevents damages to .....

b) MCB – miniature circuit breakers.

2+2+1=5

CFL – Compact Fluorescent Lamp.

c) Magnetic – Effect of electric current.

22. a) What do you mean by biodegradable waste? Give two examples?

B) What are incinerators?

23. What is composting? Write the role of red worm in this regards.

5+5=10

24. a) 1

25. c) 1

26. b) 1

27. d) 1

28. c) 1