

Date:

Class: VIII

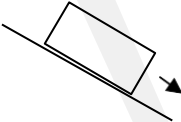
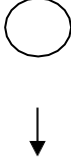
**SCIENCE**

Time:3h

M. M: 90

*General Instructions:*

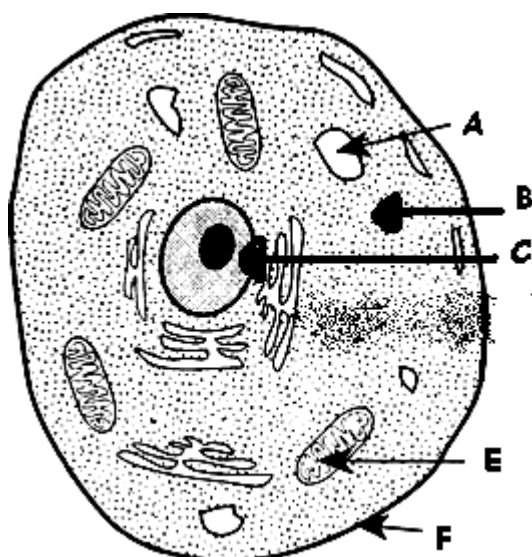
1. There are 36 questions in this paper.
2. Marks are indicated against each question.
3. Q 24 to Q 36 are based on practical skills.
4. All questions are compulsory.

- |    |   |     |
|----|---|-----|
| 1  | What is the audible range for human ears?   | 1   |
| 2  | (i)Where does fertilization of egg take place in humans?<br>(ii) Give another term used for fertilized egg?   | 1   |
| 3  | List the two factors which determine the height of an individual.   | 1   |
| 4  | Identify the agent exerting force and the object on which it acts. State the effect of force also.<br>Drawing water from a well.  | 2   |
| 5  | Explain the cause of friction with the help of a diagram.   | 2   |
| 6  | (i) What is carbonisation?<br>(ii) Why is petroleum called 'black gold'?  | 2   |
| 7  | Name and define the force depicted in the following:<br>(i) Two inflated balloons stick to the wall after being rubbed with each other.<br>(ii) A one rupee coin attracted towards a magnet.  | 3   |
| 8  | (i) The direction of applied force is shown in the following situations. What will be the direction of friction in each case.<br><br>(a) <br>(b) | 3   |
|    | (ii) Suggest two ways to reduce the frictional force in the above cases.  |     |
| 9  | Explain with the help of three examples each that friction is a necessary evil.   | 3   |
| 10 | (i) What is the difference between a eukaryotic cell and a prokaryotic cell? Give one example each.<br>(ii)What is the role of chloroplast in green plants??  | 2+1 |
| 11 | (i) Multicellular organisms are complex and evolved while unicellular organisms are simple in organization. Give reasons<br>(ii)Classify the following as unicellular and multicellular organisms/structure:  | 2+1 |

Hydra , Yeast , A hen's egg, Paramecium

12 Label the following diagram of an animal cell and mention the role of cell organelle 'E'.

3



13 How does amoeba reproduce? Explain with the help of diagrams.

3

14 Explain the three basic requirements for keeping good health during adolescence.

1+2

15 Explain how sound is produced in humans. Also state how does the quality of sound change?

3

16 What is meant by destructive distillation of coal? What are the products obtained from it? Which of these products is used in extraction of metals?

3

17 (i) Differentiate between thermoplastics and thermosetting plastics. Give one example of each.

2+1

(ii) What is the full form of PET?

18 Explain with the help of examples, three ways to minimize the use of plastics in our daily lives.

3

19 (i) Explain the formation of petroleum

5

(ii) What is petroleum refining?

(iii) Complete the table

S.No	Constituent of Petroleum	Any one of its use
1		Fuel for heavy motor vehicles.
2.	Paraffin wax	
3	Bitumen	
4		Solvent for dry cleaning

20 (i) Draw a well labeled diagram of the female reproductive system.

3

(ii) Name the female sex hormone. Where is it produced and what is its function?

2

21 (i) Explain the chromosomal sex determination in humans with the help of a flow chart.

5

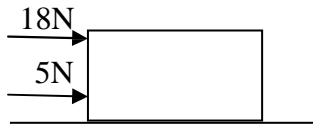
(ii) Complete the table

S.No	Endocrine Glands	Hormone secreted	Main function
1		Adrenaline	
2	Pancreas		

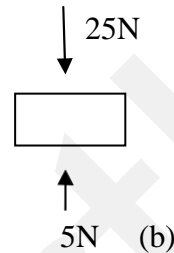
- 22 (i) List any two sources of noise pollution. 5  
 (ii) Mention any two health related problems that are caused by noise pollution.  
 (iii) Suggest two measures to limit noise pollution.  
 (iv) An object oscillates 360 times in 9seconds.what will be its time period and frequency?

- 23 (i)What is global warming? Name any two gases responsible for it. 5  
 (ii) Define eutrophication.  
 (iii) Enlist any two ways to control water pollution.

- 24 (i)What is the resultant force in the following cases 5

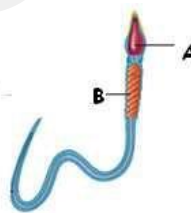


(a)



(b)

- (ii) Why skiers use long flat skies to slide over snow?  
 (iii) A force of 250N acts on an area of 5m<sup>2</sup>.Calculate the pressure exerted by the force.
- 25 A student observed a slide under microscope and identifies it to be blood cells. What identifying feature would have been helpful for him? Which blood cell in humans can change its shape? 1
- 26 Why is it advised not to wear synthetic clothes while working in kitchen or in laboratory? 1
- 27 Give any two uses of plastics in healthcare industry. 1
- 28 What is the Ganga Action Plan and when was it launched? 1
- 29 Mention two harmful effects of acid rain. 1
- 30 Identify the part which vibrates to produce sound in the following instruments 1  
 (i) Shehnai (ii)Sitar
- 31 Identify the following human gamete. Label the parts A, B in the diagram. 1



- 32 What is the importance of presence of iodine in water for metamorphosis in frogs? 1
- 33 What are CFC's? How are they harmful to the environment? 1
- 34 List any two factors responsible for pollution of a river and two ways to make water safe for drinking. 2
- 35 Classify the following substances as biodegradable and non-biodegradable. 2  
 Tissue paper , Gel pen , Aluminium foil , Glass bottle.
- 36 Give reason for the following: 2  
 (i) Sliding friction is less than static friction.  
 (i) Bodies of ships are streamlined.