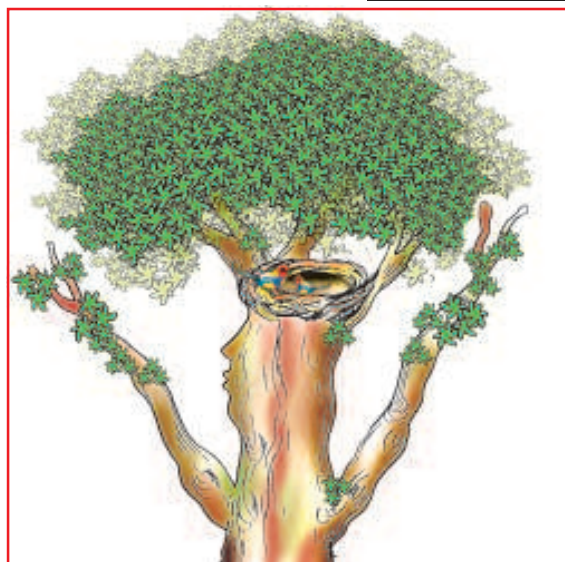


13. Only God can Make a Tree



Have you ever planted a sapling and seen it grow? If yes, share your experience with your classmates.

I think that I shall never see,
 A poem lovely as a tree.
 A tree whose hungry mouth is prest,
 Against the earth's sweet flowing breast.
 A tree that - looks at - God all day,
 And lifts her leafy arms to pray.
 A tree that may in summer wear,
 A nest of robins in her hair.
 Upon whose bosom snow has lain,
 Who intimately lives with rain.
 Poems are made by fools like me,
 But only God can make a tree.



- Joyce Kilmer

Word Meanings

robin	a small bird, (found in Europe)
bosom	chest
prest	pressed (poetic form in spelling)
intimate	very close, dear
lain (v)	spread
leafy arms	branches of a tree with leaves

Reading Comprehension

A. Put a (✓) tick mark on the correct alternative.

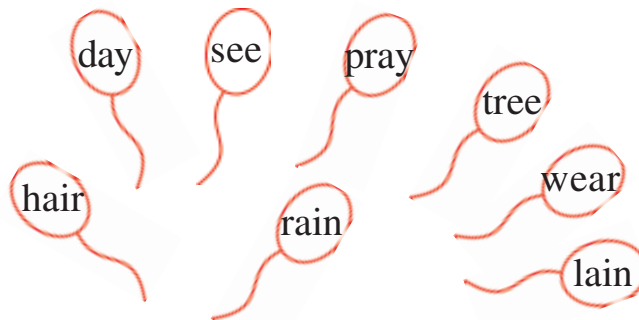
1. Who is 'T' in the poem ?
 (a) tree (b) women (c) poet (d) bird
2. The tree is like -
 (a) a mother (b) a child (c) God (d) The Earth
3. The tree is fed by -
 (a) another tree (b) Mother Earth (c) God (d) the Robin
4. The Earth in the poem is compared to -
 (a) God (b) a little girl (c) a mother (d) a tree
5. The hair of the tree is its -
 (a) stem (b) branches (c) flowers (d) roots

B. Answer the following questions.

1. What does the tree wear during summer ?
2. What part of the tree is referred to as its mouth ?
3. How can the tree lift its arms to pray ?
4. Which lines show that the tree is a female ?
5. Who lives intimately with the tree ?
6. What does the tree get from the earth's sweet flowing breast ?
7. What lay in the bosom of the tree ?

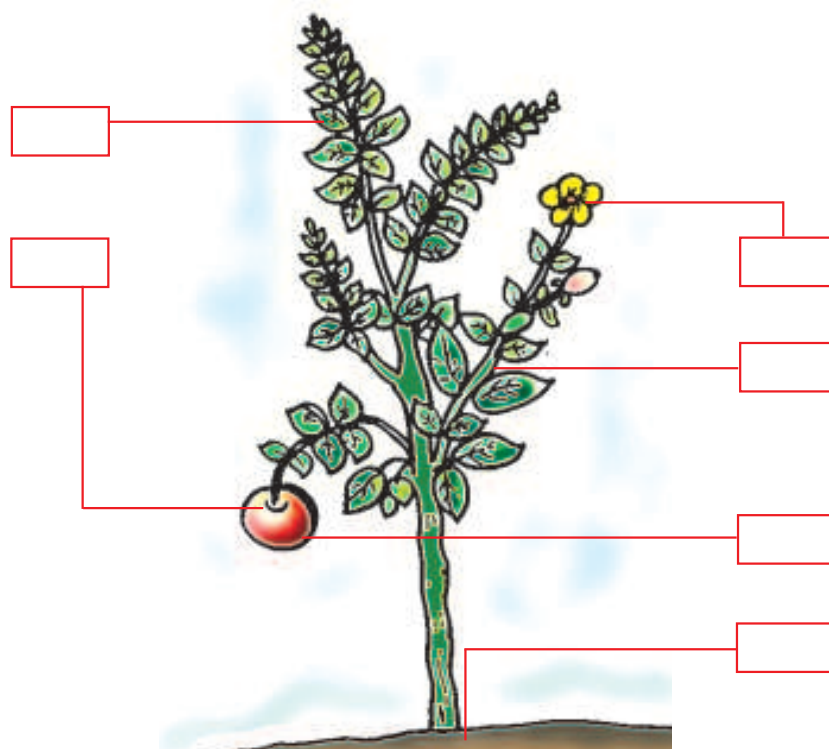
Vocabulary

A. Find out the rhyming pairs of the words.



B. Label the parts of the tree select your words from the list given in the box :

- Flower
 - Root
 - Branch
 - Bark
 - Trunk
 - Fruit
 - Leaf



Writing

Write a paragraph about your favourite tree. Take the help of the questions given.

1. Which is your favourite tree ?
2. Where is it situated ?
3. How do you care for it ?
4. How is it useful to you ?

Activity

Role play

Ask a student to play the role of a tree. Other students will go to the tree and ask/request to cut, use, pluck, scratch the different parts of the tree.

They can use sentences such as:

- Student 1** : May I pluck your flowers ?
Tree : Yes, you may.
Student 2 : Shall I scratch my name on you ?
Tree : No please. It will hurt me.

Project

Collect leaves of different plants. Paste them on a herbarium file.

