

18TH CENTURY POLITICAL FORMATIONS



[www.evidyarthi.in](http://www.evidyarthi.in)

<https://www.evidyarthi.in/>

## TOPICS:



**INTRODUCTION**



**THE CRISIS OF THE EMPIRE AND THE LATER MUGHALS**

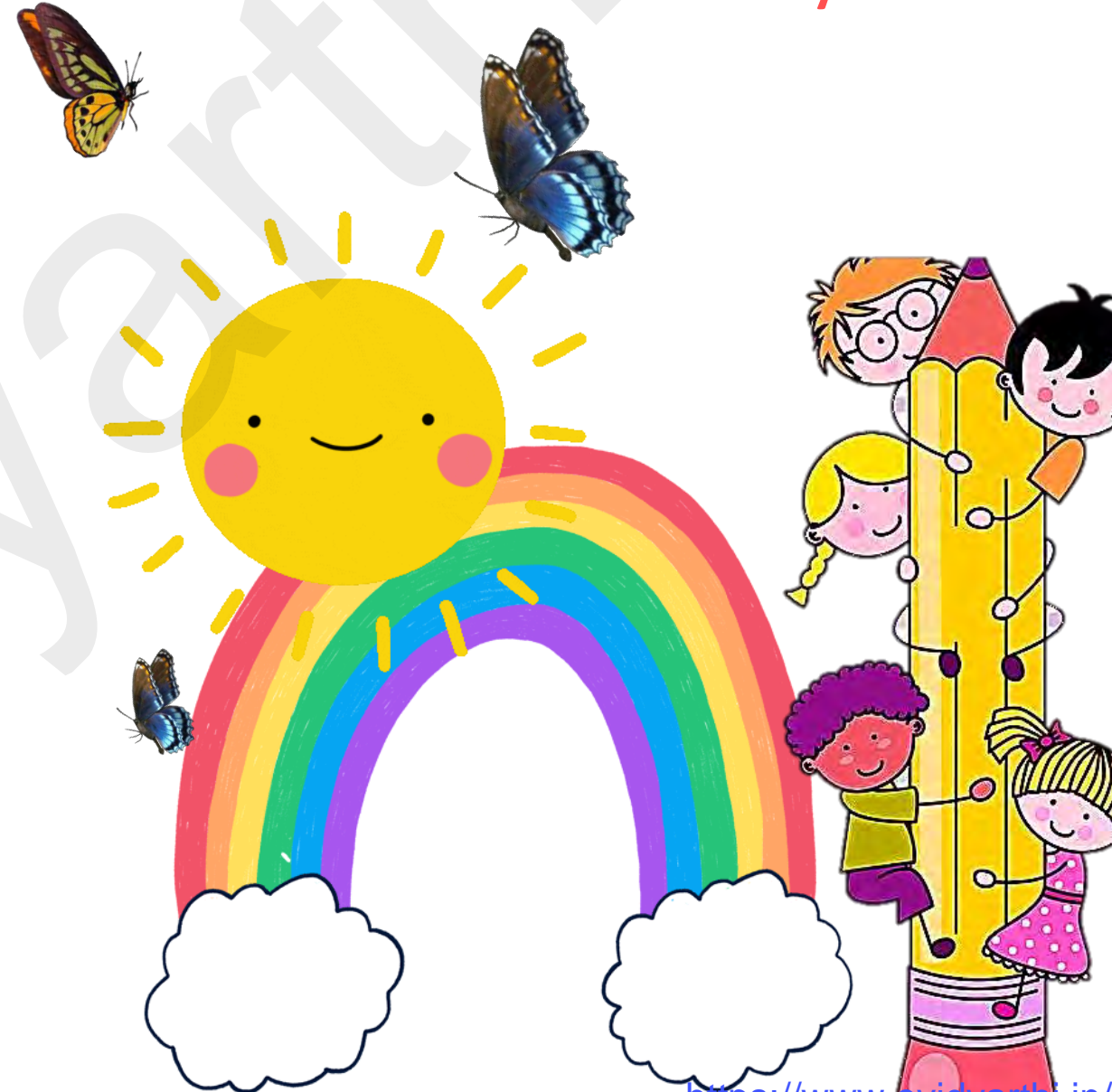


**EMERGENCE OF NEW STATES**



**THE OLD MUGHAL PROVINCES**

[www.evidyarthi.in](http://www.evidyarthi.in)



# CLASS VII CH 10 EIGHTEENTH-CENTURY POLITICAL FORMATIONS



**HYDERABAD**



**AWADH**



**BENGAL**



**THE WATAN JAGIRS  
OF THE RAJPUTS**



**SEIZING INDEPENDENCE**

[www.evidyarthi.in](http://www.evidyarthi.in)



# CLASS VII CH 10 EIGHTEENTH-CENTURY POLITICAL FORMATIONS

[www.evidyarthi.in](http://www.evidyarthi.in)



**THE SIKHS**



**THE MARATHAS**



**THE JATS**



<https://www.evidyarthi.in/>

## INTRODUCTION

- Significant changes came in the half of the **18<sup>TH</sup> CENT.** (in the Mughal boundaries)
- As many new powers in 1765 came such as British had grabbed chunks of **EASTERN INDIA.**



- We will read about the emergence of new political groups during 1707 when **AURANGZEB** died till the **THIRD BATTLE OF PANIPAT IN 1761.**



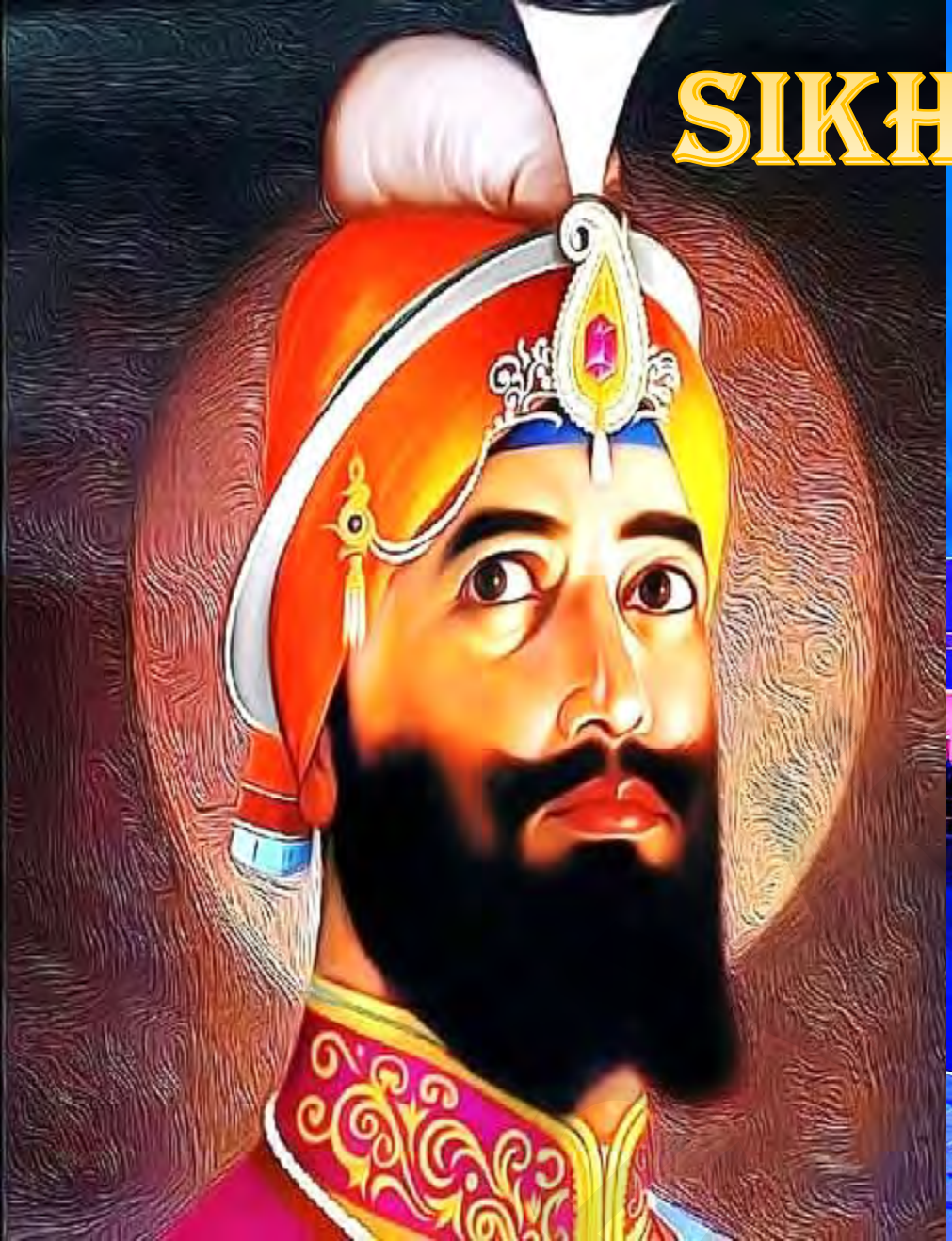
# CLASS VII CH 10 EIGHTEENTH-CENTURY POLITICAL FORMATIONS





# SIKH (KHALSA)

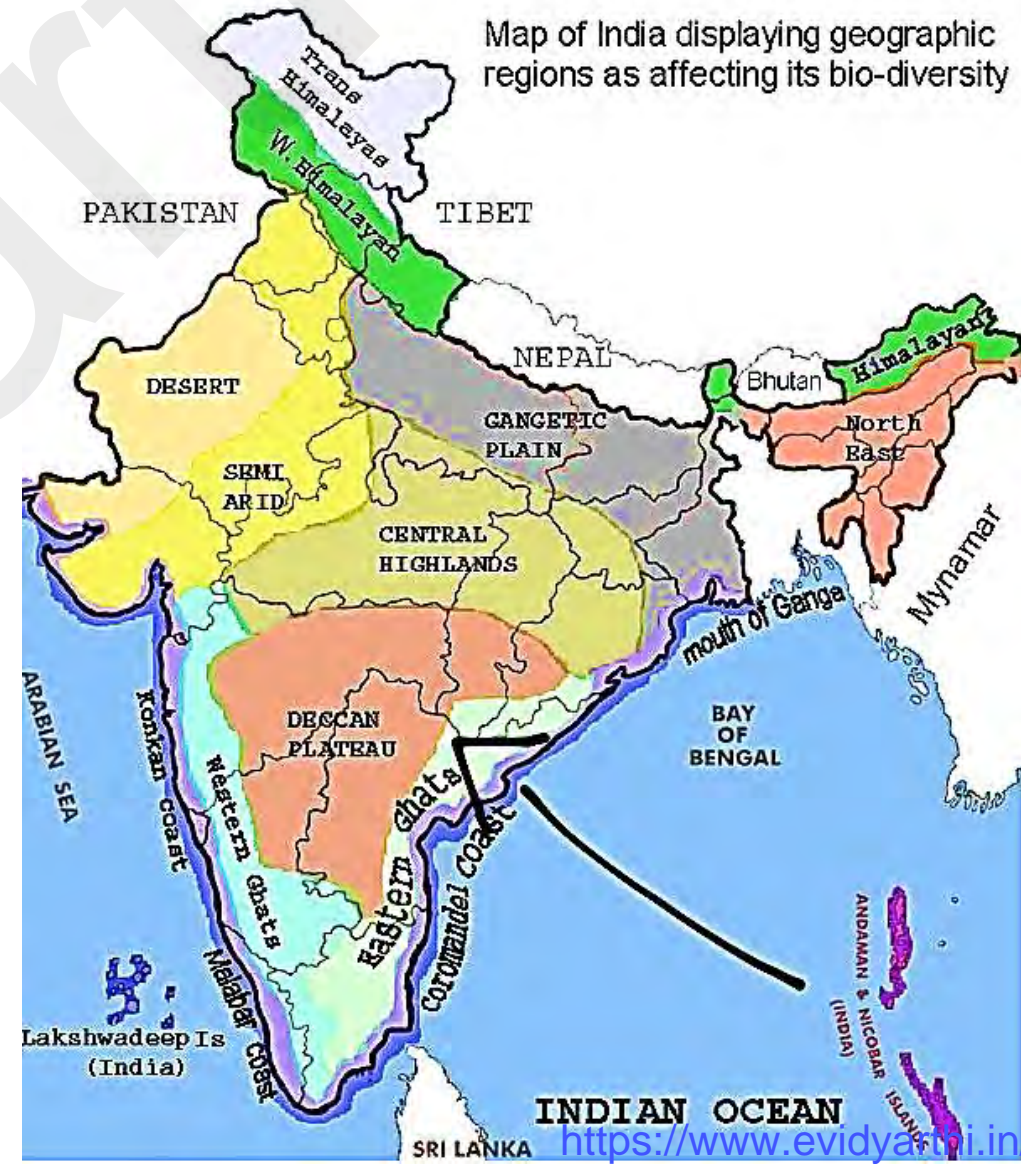
[www.evidyarthi.in](http://www.evidyarthi.in)



## THE CRISIS OF THE EMPIRE AND THE LATER MUGHALS

- Deccan part of India - KARNATAKA, KERALA, TAMIL NāDU, TELANGANA, MAHARASHTRA, ANDHRA PRADESH (in the map)

[www.evidyarthi.in](http://www.evidyarthi.in)



# CLASS VII CH 10 EIGHTEENTH-CENTURY POLITICAL FORMATIONS

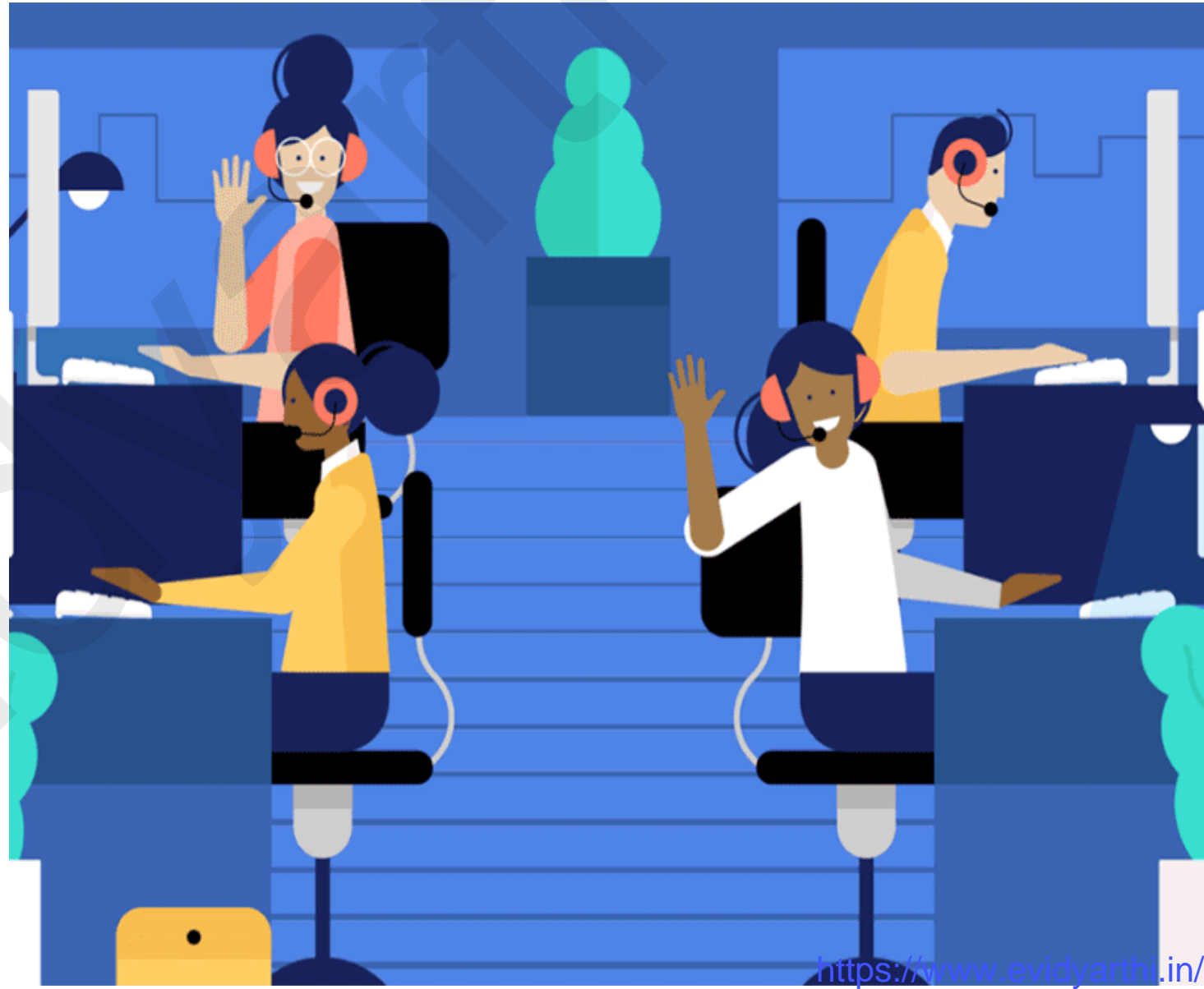
- In ch-4 Mughal reached of its success and started facing crises in the closing years of **17<sup>TH</sup> CENT.**



- These were caused by numbers of factors, emperor **AURANGZEB** had depleted the **MILITARY AND FINANCIAL RESOURCES** of his empire by fighting long war in deccan.
- Later the administration broke down. It became difficult for the later **MUGHAL EMPEROR** to keep check on their powerful **MANSABDARS**.



- **NOBLES** appointed as governors (**SUBADARS**) controlled the offices of revenue and administrations (**DIWAN AND FAUJDARI AS WELL**)
- This gave them **MILITARY, POLITICAL, ECONOMIC** power over vast empire of Mughals.



## MANSABDARS

(nobles)with  
military  
responsibilities  
and jagirs.

## FAUJDARI

Office of military  
commander,  
revenue function  
and court.

## DIWAN

High position  
officials in  
court(finance)

## SUBADARS

Governor, political  
military functions



- **PEASANTS AND ZAMINDARS** rebellion in many parts of **NORTHERN AND WESTERN INDIA** added to the problems of Mughal as revolt were sometime causes by **MOUNTING TAXES** and Mughals were been challenged by rebellion groups also.
- But these groups were not able to seize any economic resources and emperor after Aurangzeb



## PEASANTS



## ZAMINDARS



- were unable to arrest the gradual shifting of political and economic authority from the hands of **GOVERNORS, LOCAL CHIEFTAINS AND OTHER GROUPS.**
- in the meantime of this political crises the ruler of Iran, **NADIR SHAH** sacked and plundered the city of **DELHI** and took immense amount of wealth.

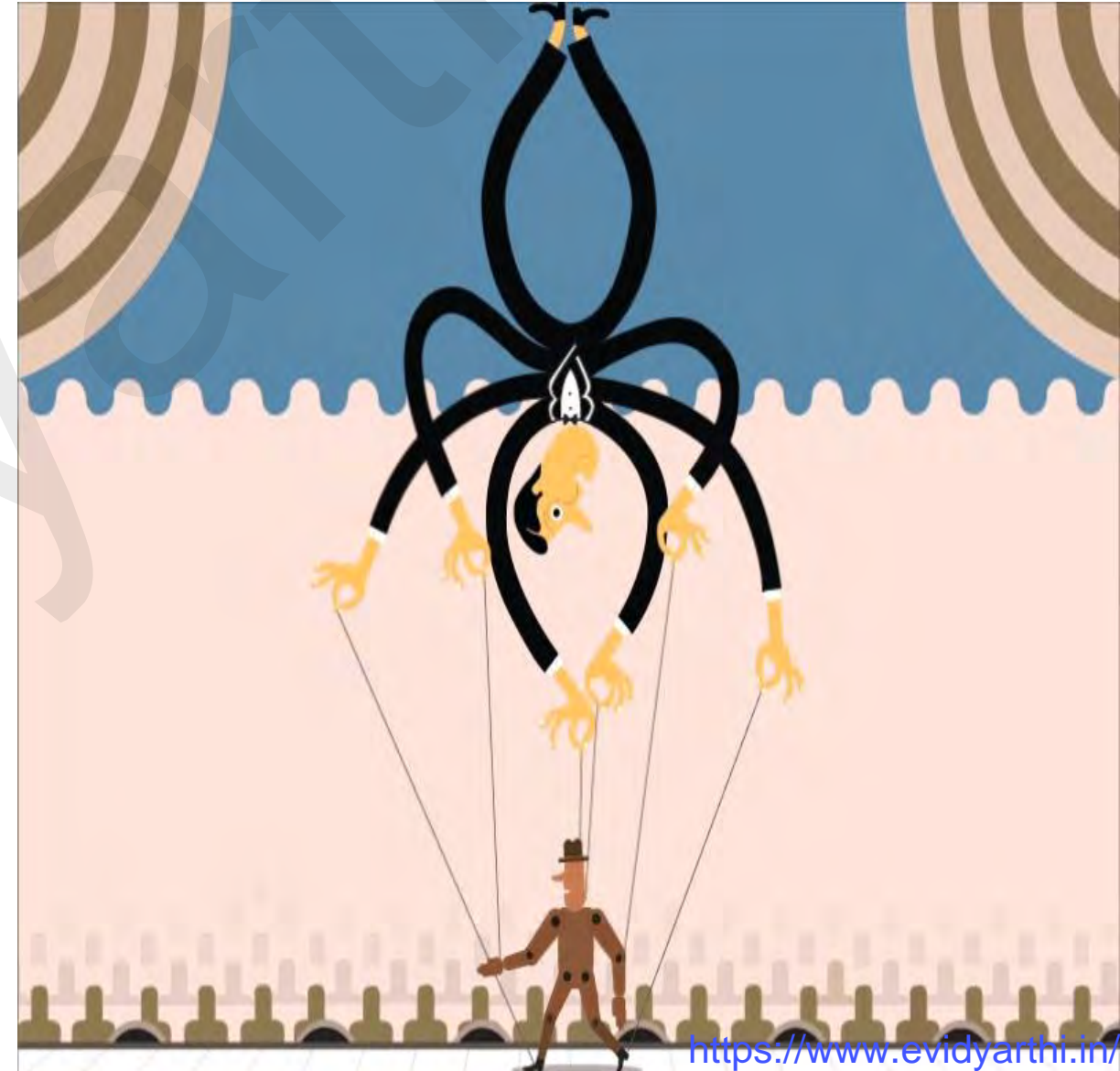


# CLASS VII CH 10 EIGHTEENTH-CENTURY POLITICAL FORMATIONS

- These invasions were followed by Afghan rulers **AHMAD SHAH ABDALI**, who invaded north India **5 TIMES BETWEEN 1748 AND 1761.**
- Already under severe pressure from all sides. Empire got weekend by division of different **GROUPS OF NOBLES.**



- They were divided into two groups **IRANI'S AND TURANNIS** (nobles of Turkish decent) later Mughal emperor were puppets in the hands of one of these powerful groups.
- Worst humiliation came when two Mughal emperor **FARRUKH SIYAR (1713-1719)** assassinated and **SHAH ALAM III (1759 – 1816)** were blinded by their nobles.



# CLASS VII CH 10 EIGHTEENTH-CENTURY POLITICAL FORMATIONS

[www.evidyarthi.in](http://www.evidyarthi.in)

## FARRUKH SIYAR



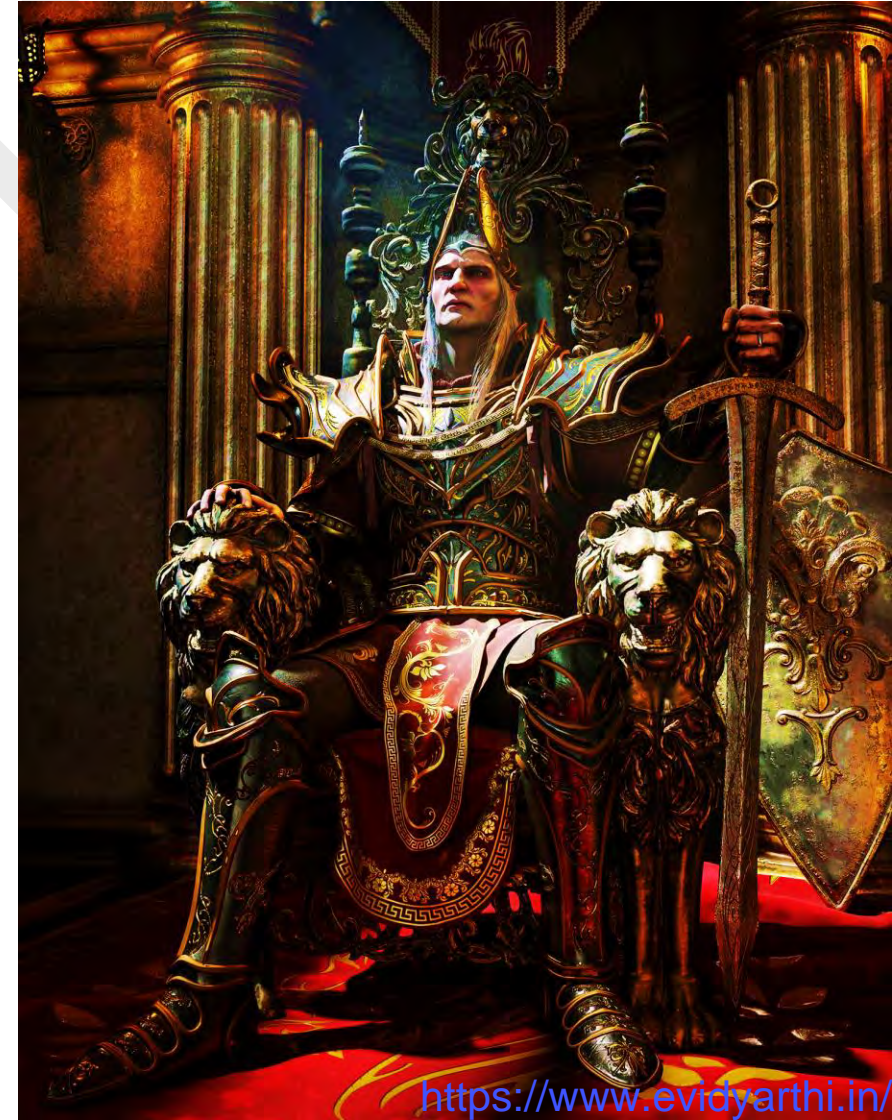
## SHAH ALAM III



<https://www.evidyarthi.in/>

## EMERGENCE OF NEW STATES

- With the decline in the Mughal authority and emperors, the **GOVERNORS, ZAMINDARS** consolidated their authority in different parts.
- In the 18<sup>th</sup> cent. Mughal empire gradual fragments into many **INDEPENDENT STATES**. States of 18<sup>th</sup> cent can be divided into groups



- ❖ 1) states that were old Mughals province like **AWADH, BENGAL AND HYDERABAD** (extremely powerful and quite independent)
  - rulers of these states did not break their **FORMAL TIES** with Mughal emperor.
- ❖ 2) States that enjoyed independence under the Mughals as **WATAN JAGIRS** **INCLUDES RAJPUT PROVINCE.**



- ❖ 3) last groups includes state under control of **MARATHAS, SIKHS AND JATS.**
- These were of different sizes and had seized independent from Mughals after a **LONG DRAWN ARMED STRUGGLE.**



# CLASS VII CH 10 EIGHTEENTH-CENTURY POLITICAL FORMATIONS



[www.evidyarthi.in](http://www.evidyarthi.in)



**MARATHAS**

<https://www.evidyarthi.in/>

# CLASS VII CH 10 EIGHTEENTH-CENTURY POLITICAL FORMATIONS



[www.evidyarthi.in](http://www.evidyarthi.in)



**SIKHS**

<https://www.evidyarthi.in/>

## JATS



RAJA SURAJMAL

## THE OLD MUGHAL PROVINCES

- Among that states that were carried out of the old Mughal provinces in the **18<sup>TH</sup> CENT** three stand out very prominently i.e. **AWADH, BENGAL AND HYDERABAD.**
- They were members of Mughal nobility who had governors of large province **SA'ADAT KHAN (AWADH)**
- **ASAF JAH (HYDERABAD)**





**BURHAN-UL-  
MULK SA'ADAT  
KHAN**

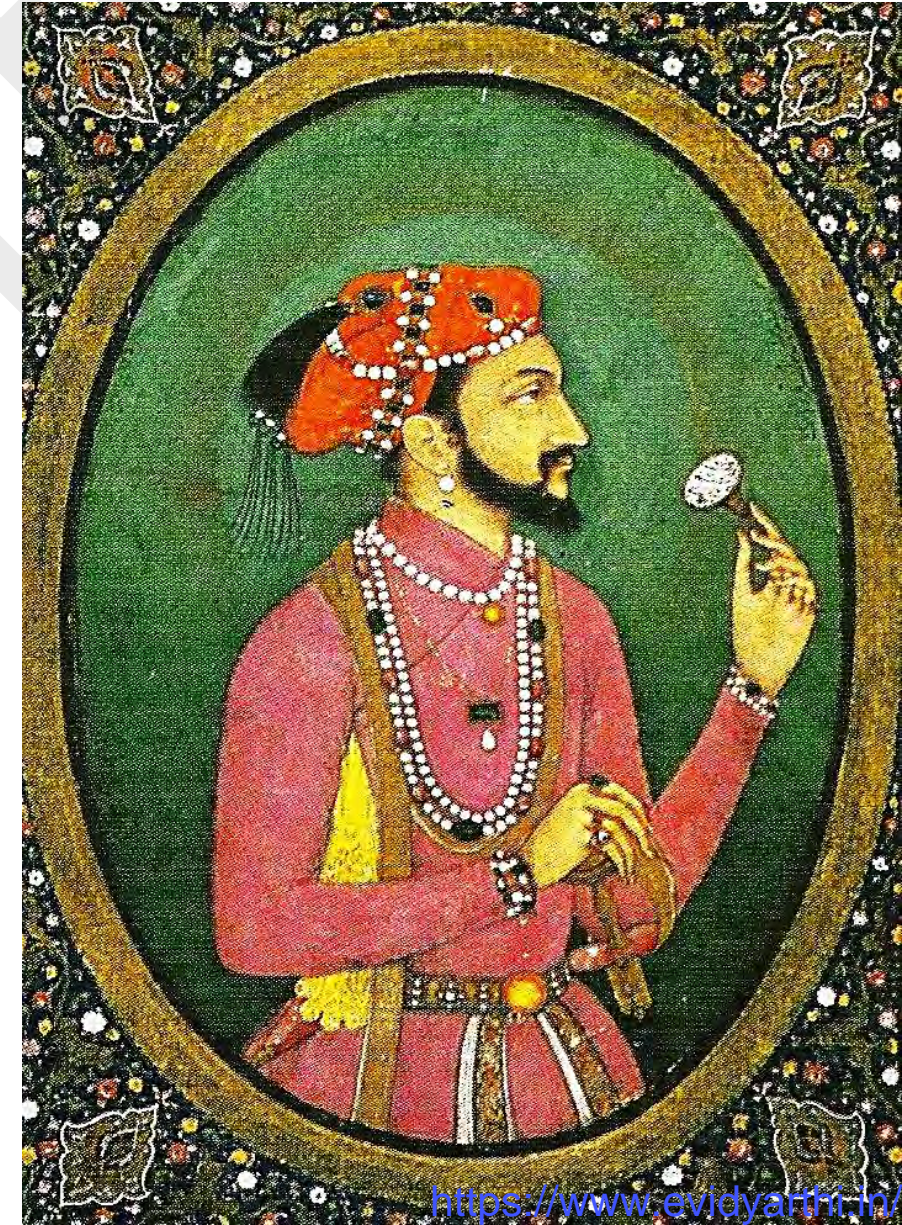
**NIZAM-  
UL-MULK  
ASAF JAH**



# CLASS VII CH 10 EIGHTEENTH-CENTURY POLITICAL FORMATIONS

- They already had high mansabdari positions and enjoyed trust and confidence of emperor.
- Both **ASAF JAH AND MURSHID QULI KHAN (BENGAL)** had **A ZAT RANK OF 7,000 AND 6,000 EACH.**

[www.evidyarthi.in](http://www.evidyarthi.in)



<https://www.evidyarthi.in/>

## THE OLD MUGHAL PROVINCES

[www.evidyarthi.in](http://www.evidyarthi.in)

### HYDERABAD

- **NIZAM – UL –MULK ASAL JAH** (founder of Hyderabad state 1724-1748) was most powerful members at the court of Mughal **EMPEROR FARRUKH SIYAR**.
- **ASAF JAH** was interested first with governorship of Awadh but later given charge of **DECCAN**.



- As he became Mughal governor of deccan during **1720-22 ASAF JAH** already gained control **POLITICAL AND FINANCIAL ADMINISTRATION**, later he gather power in his hands and became actual ruler of the region.
- **ASAF JAH** bought skilled labors, administrators from north India, appointed **MANSABDARS WITH JAGIRS** granted to them.



- Even he was a servant of Mughal he independently ruled without any problem. Mughal emperor merely confirmed decisions made by **ASAF JAH**.
- State of **HYDERABAD** was struggling against **MARATHAS IN THE WEST AND TELEGU WARRIOR CHIEFS (NAYAKAS)**



## TELEGU WARRIOR



## MARATHAS



## THE OLD MUGHAL PROVINCES

[www.evidyarthi.in](http://www.evidyarthi.in)

### AWADH

- **BURHAN-UL-MULK SA'ADAT** Khan was appointed subadar of Awadh in 1722.
- Awadh was a prosperous regions controlling rich **ALLUVIAL GANGA PLAN** and main trade routes between **NORTH INDIA AND BENGAL.**



<https://www.evidyarthi.in/>

# CLASS VII CH 10 EIGHTEENTH-CENTURY POLITICAL FORMATIONS

- **BURHAN-UL-MULK** held offices of **SUBADARI, DIWANI AND FAUJADARI**, simply responsible for managing **FINANCIALY, POLITICALY, MILITARY AFFAIRES OF AWADH.**
- Burhan tried to decrease Mughal influence in **AWADH** by reducing office holders (**JAGIRDARS**) appointed by **MUGHALS.**

[www.evidyarthi.in](http://www.evidyarthi.in)



<http://www.evidyarthi.in>

# CLASS VII CH 10 EIGHTEENTH-CENTURY POLITICAL FORMATIONS

[www.evidyarthi.in](http://www.evidyarthi.in)

## MANSABDARS

(nobles) with military responsibilities and jagirs.

## FAUJDARI

Office of military commander, revenue function and court.

## DIWAN

High position officials in court (finance)

## SUBADARS

Governor, political military functions



<https://www.evidyarthi.in/>

- He appointed his own loyal servants account of **JAGIRDARS** were checked to prevent cheating of revenue of all district were checked by the official appointed by the **NAWABS COURT**.
- He seized no. of **RAJPUT ZAMINS AND AGRICULTURAL FERTILE LAND OF AFGHANS OF ROHILKHAND**.



- State was dependent on **LOCAL BANKERS AND MAHAJAN'S** for **LOANS REVENUE FARMERS (IJARADARS)** agreed to pay the state sum of **FIXED MONEY**.
- Revenue farmers were involved in the collections of taxes, these developments allow new **SOCIAL ORDERS I.E. MONEYLENDERS BANKERS** to influence state revenue system.



## THE OLD MUGHAL PROVINCES

[www.evidyarthi.in](http://www.evidyarthi.in)

### BENGAL

- Bengal broke under Mughal control of **MURSHID QULI KHAN** appointed as **NAIB** (deputy to the governor of province)
- Never stayed in low rank like, the **RULERS OF HYDERABAD AND AWADH** (they commanded revenue administration)



- He wanted to reduce Mughal influence and transferred all Mughal **JAGIRDARS TO ORISSA** and changed revenue system of Bengal.



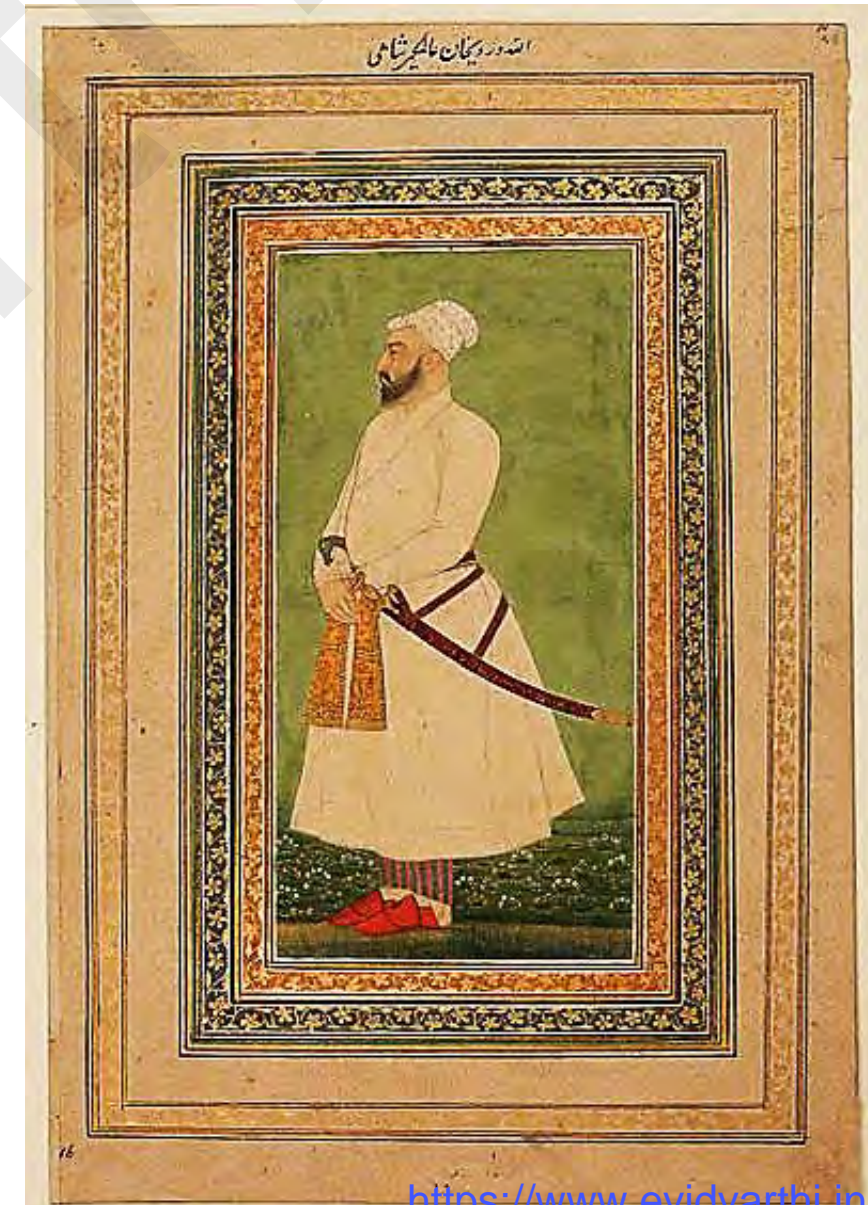
- Revenue was collected in cash from all zamindars strictly, **ZAMINDARS HAD TO BORROW MONEY FROM BANKERS AND LENDERS.** Those were unable to pay, have to sell their land to large zamindars.



# CLASS VII CH 10 EIGHTEENTH-CENTURY POLITICAL FORMATIONS

- There were a close connection between the state and bankers, it was noticeable in **HYDERABAD AND AWADH**, evident in Bengal under the rule of alivardi khan (1740,1756) during his reign banking house were prosperous.
- **COMMON FEATURES AMONGST THESE STATES-**

[www.evidyarthi.in](http://www.evidyarthi.in)



<https://www.evidyarthi.in/>

## IJARADARI SYSTEM

1. Administration system was highly suspicious (**JAGIRDARI SYSTEM PARTICULARLY**)
2. Method of **TAX COLLECTION** differed.
  - Collection of revenue was done by revenue farmers. This practice of **IJARADARI** was disapproved by Mughals spread in **18<sup>TH</sup> CENT.**



## 3. Relationship with rich **BANKERS AND MERCHANTS.**

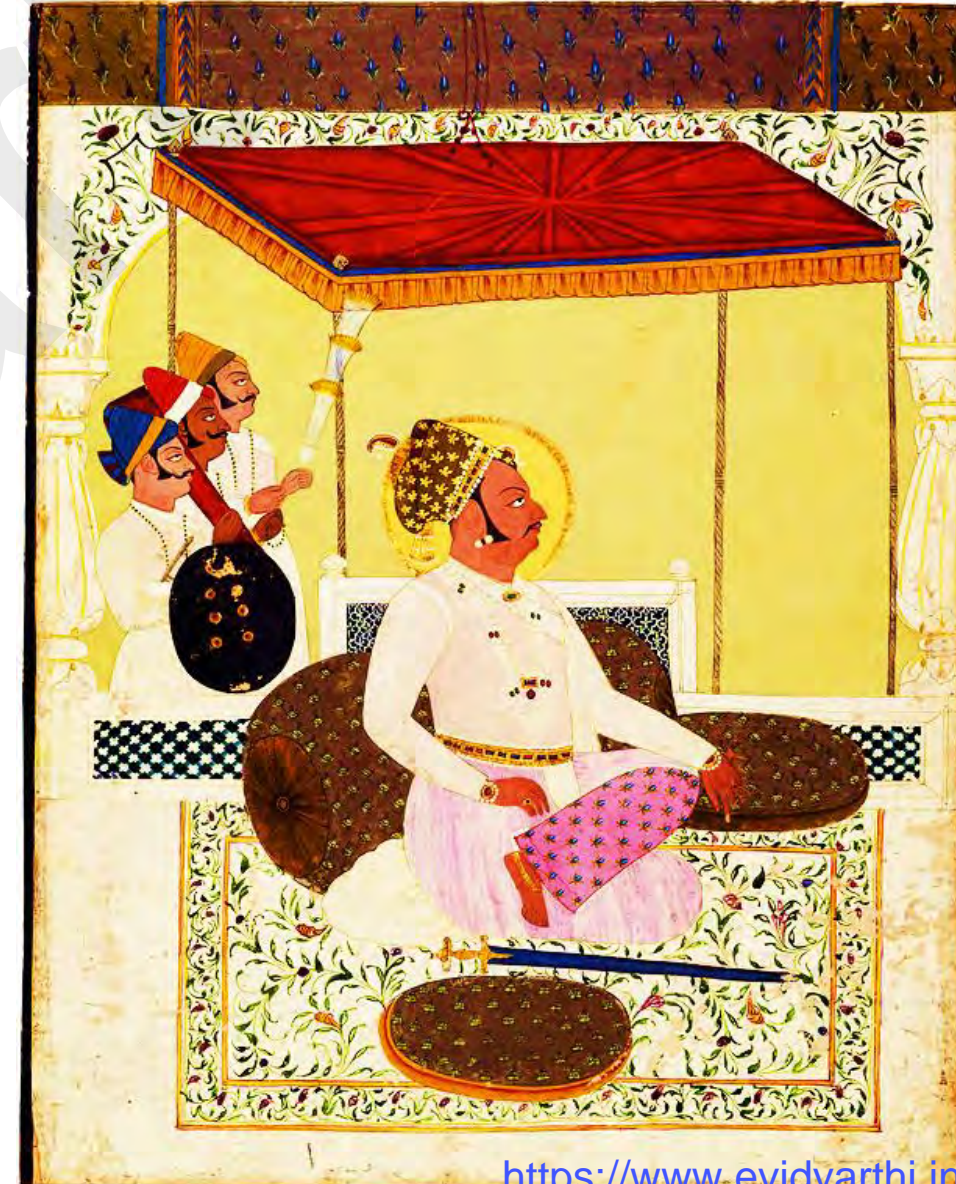
- Merchant and bankers lent money to farmers.
- Receive land as society **COLLECTED TAX** from these lands through their own agents(farmers)
- Slowly **RICH MERCHANTS AND BANKERS** gaining a portfolio in order.



## THE WATAN JAGIRS OF THE RAJPUT'S

- Rajput rulers of amber and **JODHPUR** served Mughals. in exchange self government in their **WATAN JAGIRS**.
- **AJIT SINGH RULER OF JODHPUR** was included in the Mughal court.
- Many Rajput families claimed subadari(political and military function)of rich province of **GUJRAT AND MALWA**.

[www.evidyarthi.in](http://www.evidyarthi.in)



<https://www.evidyarthi.in/>

## MUGHAL RELATIONS WITH RAJ PUTS



# CLASS VII CH 10 EIGHTEENTH-CENTURY POLITICAL FORMATIONS



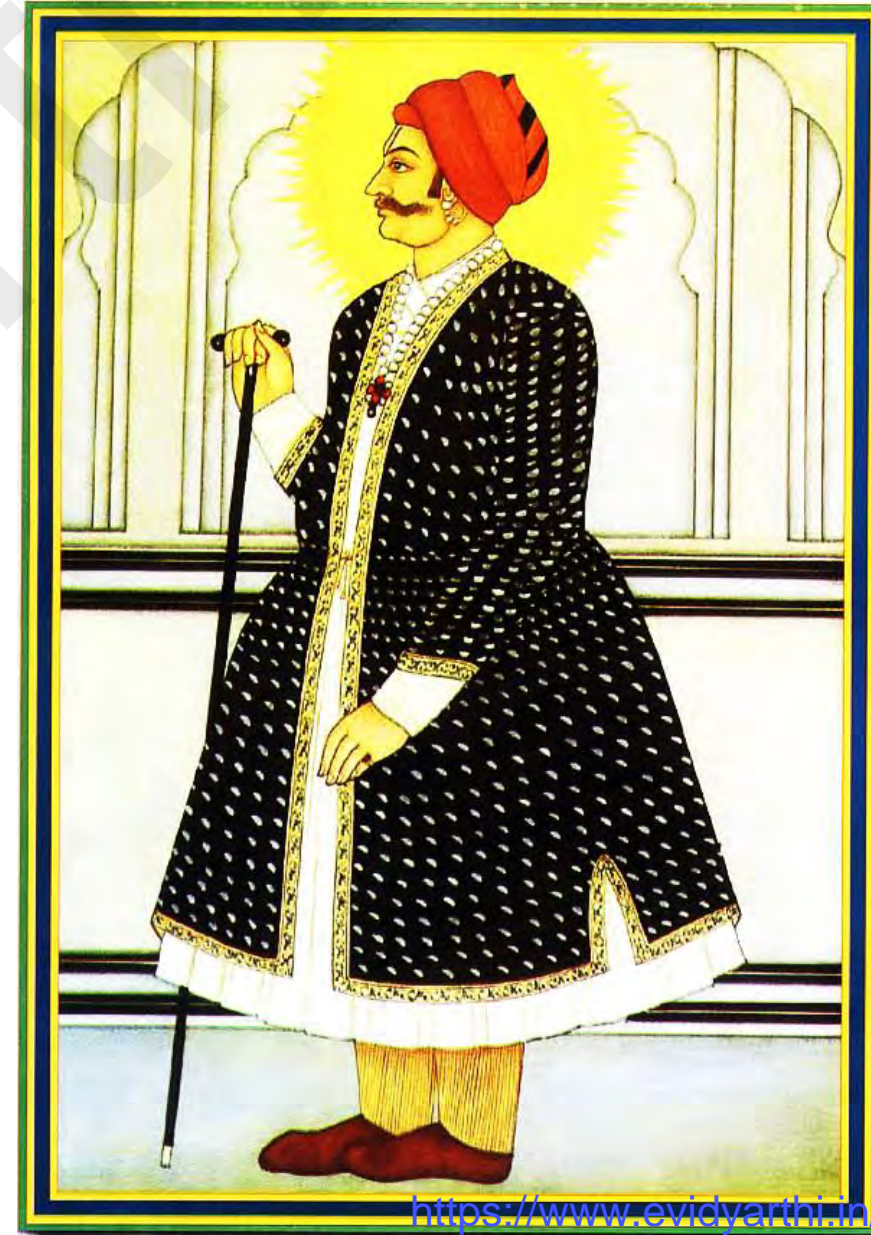
[www.evidyarthi.in](http://www.evidyarthi.in)



**RAJPUT'S  
CLAIMED  
RESPECTFUL  
JOBS IN  
MUGHAL  
COURT**

<https://www.evidyarthi.in/>

- **RAJA AJIT SINGH OF JODHPUR** held governorship of **GUJRAT, SAWAL RAJA JAI SINGH** of amber was governor of **MALWA**.
- This offices was emperor was renewed by emperor **JAHANDAR SHAH IN 1713**.Nagpur was conquered and annexed by jodhpur while **AMBER SEIZED BUNDI**.



## SEIZING INDEPENDENCE

### THE SIKHS

- Many organizations of **SIKH** **DURING 7<sup>TH</sup> CENT** helped building state of Punjab battles were fought by **GURU GOBIND SINGH** against Mughals and **MARATHAS**. Both before and after the institution of **KHALSA** **IN 1699**.

[www.evidyarthi.in](http://www.evidyarthi.in)



<https://www.evidyarthi.in/>

- After his death **KHALSA ROSE REVOLT** against Mughals under Banda bahadurs leadership, **COIN MINTING** in name of **GURU NANAK AND GOBIND SINGH**.
- Established rule in **SUTLEJ AND JAMMU** later bahadur was captured in **1715, EXECUTED IN 1716**

## COIN MINTING



# CLASS VII CH 10 EIGHTEENTH-CENTURY POLITICAL FORMATIONS



**GURU  
NANAK**



**GOBIND  
SINGH**



# CLASS VII CH 10 EIGHTEENTH-CENTURY POLITICAL FORMATIONS

[www.evidyarthi.in](http://www.evidyarthi.in)

## SUTLEJ RIVER



## JAMMU AND KASHMIR



<https://www.evidyarthi.in/>

# CLASS VII CH 10 EIGHTEENTH-CENTURY POLITICAL FORMATIONS

[www.evidyarthi.in](http://www.evidyarthi.in)

- In 18<sup>th</sup> cent. Sikhs organized no. of bands called **JATHAS**, later on **MISLS**. Their combined forces were known as the grand army(**DAL KHALSA**)
- Whole body use to meet at **BAISAKHI AND DIWALI IN AMRITSAR** to take collective decisions(**RESOLUTION OF GURU (GURMATAS)**)



<https://www.evidyarthi.in/>

## BAISAKHI AND DIWALI





## JATHAS

**A JATHA IS AN  
ARMED BODY  
OF SIKHS**



## MISLS

**THE MISLS WERE  
THE TWELVE  
SOVEREIGN STATES  
OF THE SIKH  
CONFEDERACY**



zoe persico november 2014

- **SYSTEM OF RAKHI** was introduced in **18<sup>TH</sup> CENT** offering protection to the cultivators on the payment of **TAX OF 20%**.
- **GURU GOBIND INSPIRED THE KHALSA** (raj karega Khalsa) they challenged the Mughal governors and then to **ABDALI SHAH** who seized **PUNJAB AND SARKAR OF SIRHIND**.



## SIRHIND AND PUNJAB



- Khalsa strike their own coins in **1765**,sikh territory extended in 18<sup>th</sup> cent from the **INDUS TO JAMMU** (ruled under different rulers)
- **MAHARAJA RANJIT** reunited these groups and created **LAHORE THE CAPITAL IN 1799.**



## THE MARATHAS

- **MARATHAS** another powerful kingdom(1627-1680)opposition of Mughal. **SHIVAJI** (1627-1680)a stable kingdom with support of Deshmukh(warrior family)
- **HIGH POST GROUPS, PEASANTS, PASTORALIST**
- (kunbis)provided backbone to the Maratha army, Shivaji challenged Mughals in the **PENINSULA.**

## CHHATRAPATI SHIVAJI



- After **SHIVAJI'S DEATH**, effective power in the Maratha state was wielded by a family of **CHITPAVAN BRAHMANAS** who served **SHIVAJI'S** successors as Peshwa (or principal minister).
- Later **POONA** became the capital of Maratha kingdom, Marathas developed a successful military organization under **PESHWAS** by **RAIDING CITIES, ENGAGING MUGHAL ARMY ,BYPASSING MUGHAL FORTIFIED AREAS.**



# CLASS VII CH 10 EIGHTEENTH-CENTURY POLITICAL FORMATIONS

## SAMBHAJI

[www.evidyarthi.in](http://www.evidyarthi.in)



<https://www.evidyarthi.in/>

# CLASS VII CH 10 EIGHTEENTH-CENTURY POLITICAL FORMATIONS

[www.evidyarthi.in](http://www.evidyarthi.in)

- In **1720 AND 1761** Maratha empire expanded, **MALWA AND GUJRAT** were seized from Mughals in 1720s
- In **1730S** Maratha king became overlord of entire **DECCAN PENINSULA** now he can levy **CHAUTH AND SARDESHMUKHI** in entire region.



<https://www.evidyarthi.in/>



## **SARDESHMUKHI**

**9-10% OF THE LAND REVENUE PAID TO THE HEAD REVENUE COLLECTOR IN THE DECCAN**



## **CHAUTH**

**25% OF THE LAND REVENUE CLAIMED BY ZAMINDARS. IN THE DECCAN THIS WAS COLLECTED BY THE MARATHA'S.**



# CLASS VII CH 10 EIGHTEENTH-CENTURY POLITICAL FORMATIONS

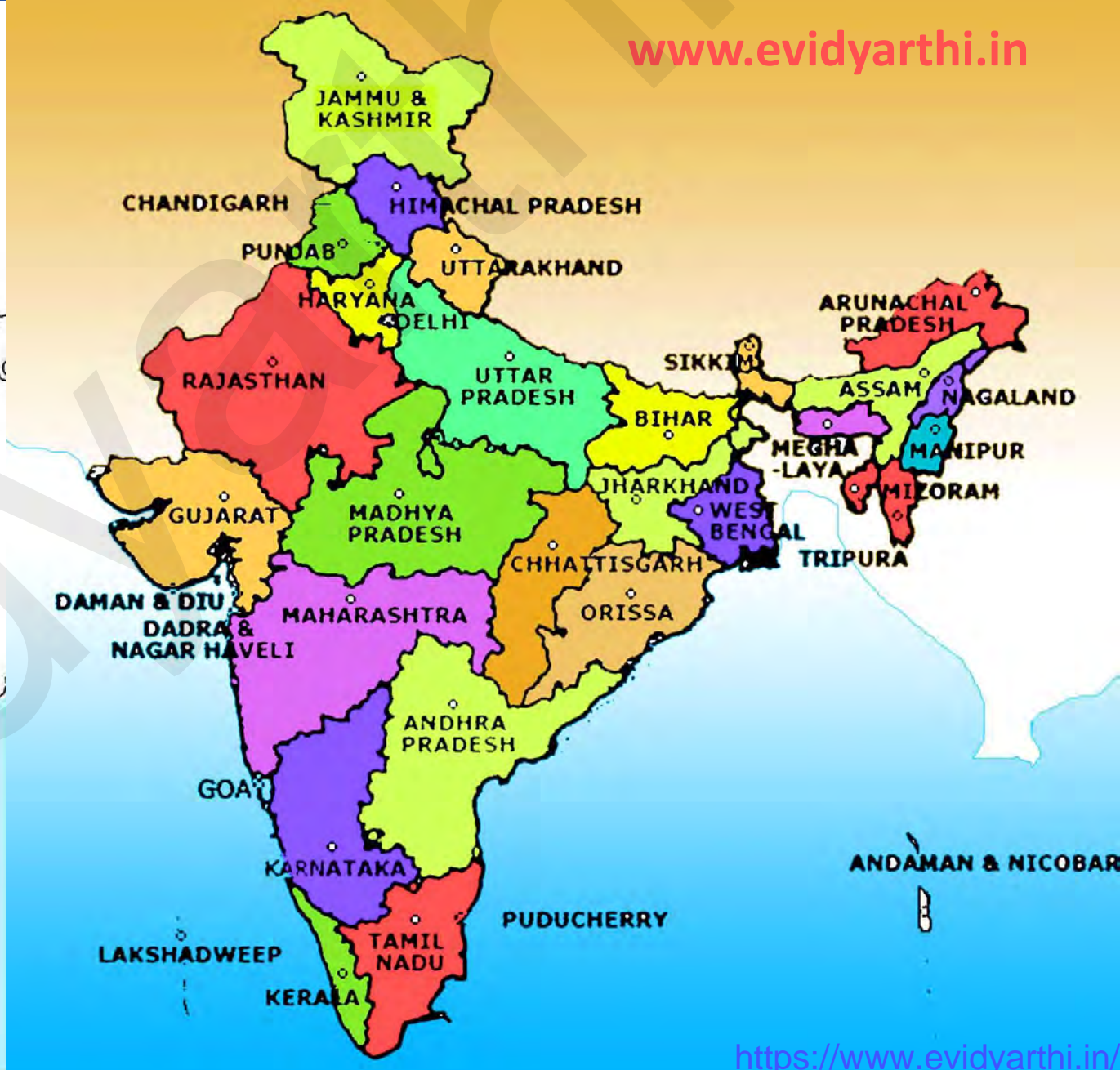
- After raiding Delhi in 1737, Maratha domination expanded rapidly into **RAJASTHAN AND PUNJAB** in the north into **BENGAL AND ORISSA** in the east and into **KARNATAKA AND THE TAMIL AND TELEGU** countries in the south.
- These regions were not included in the Maratha empire but used to pay tribute to their sovereignty.

[www.evidyarthi.in](http://www.evidyarthi.in)



<https://www.evidyarthi.in/>

# CLASS VII CH 10 EIGHTEENTH-CENTURY POLITICAL FORMATIONS



- They got enormous resources but due to military campaign, rulers of different region became **HOSTILE, INCLINED TO SUPPORT MARATHA IN 3<sup>RD</sup> BATTLE OF PANIPAT IN 1761.**
- Maratha developed effective administration system, revenue demand introduced, **AGRICULTURE WAS ENCOURAGED TRADE REVIVED.**

## TRADE OF RAW MATERIAL



## AGRICULTURE INCREASED



## REVENUE SYSTEM INTRODUCED



- Thus allowed Maratha chiefs, (sardar) like **SINDHIA OF GWALIOR, GAEKWAD OF BARODA** and **BHOSLE OF NAGPUR** raise powerful armies.
- Maratha campaign into **MALWA IN 1720S** did not pay attention to growth and **PROSPERITIES OF CITIES.**

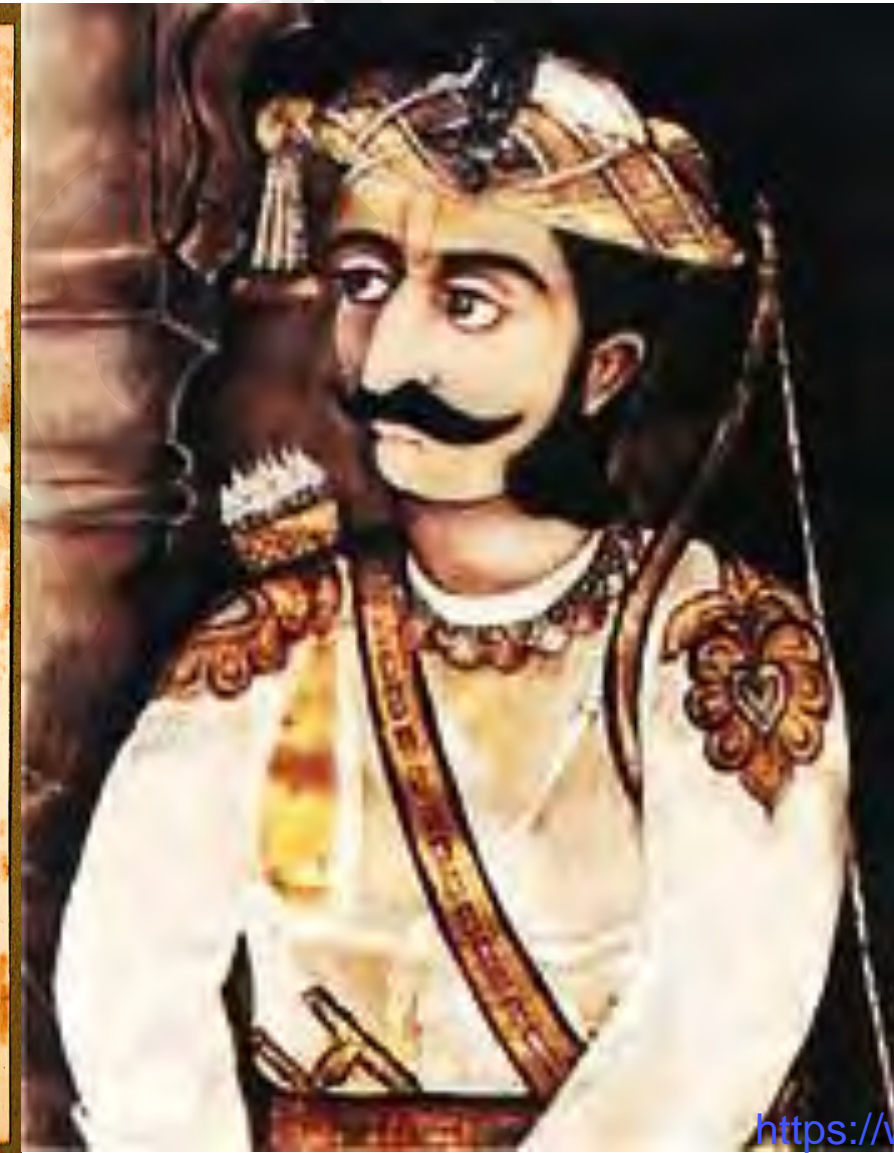


## GAEKWAD OF BARODA



Maharaja Sayajirao  
Gaekwad III

## BHOSLE OF NAGPUR



- **UJJAIN EXPANDED UNDER SINDHIA, INDORE UNDER HOLKERS** (these cities were commercial and prosperous centers)
- Now trade routes emerged within the areas controlled by **MARATHAS** , **SILK PRODUCE IN CHANDERI** now found in **POONA (MARATHA CAPITAL)**

[www.evidyarthi.in](http://www.evidyarthi.in)

**SILK IN CHANDERI**



## THE JATS

- Jats consolidated their power during late **17<sup>TH</sup> AND 18<sup>TH</sup> CENT** under their leaders chairman, acquired territories of Delhi and by the 1680s they dominated **DELHI AND AGRA**.
- They were prosperous agriculturist and towns like **PANIPAT AND BALLABHGARH** became important **TRADING CENTERS** dominated by them.



- Under **SURAJ MAL, BHARATPUR** kingdom became a strong state. Many people took refuge there when **NADIR SHAH** attacked Delhi in 1739.
- His son Jawahir shah had **30,000 TROOPS** ,HIRED **20,000 MARATHA, 15,000 SIKH TO FIGHT MUGHALS**.
- Bhartpur was built in a **TRADITIONAL STYLE**, garden place was seen at **AMBER AND AGRA**, used architectural form of **SHAH JAHAN PERIOD**.

[www.evidyarthi.in](http://www.evidyarthi.in)

**SURAJ MAL**



<https://www.evidyarthi.in/>



## TROOPS FAUGHT WITH AURANGZEB

